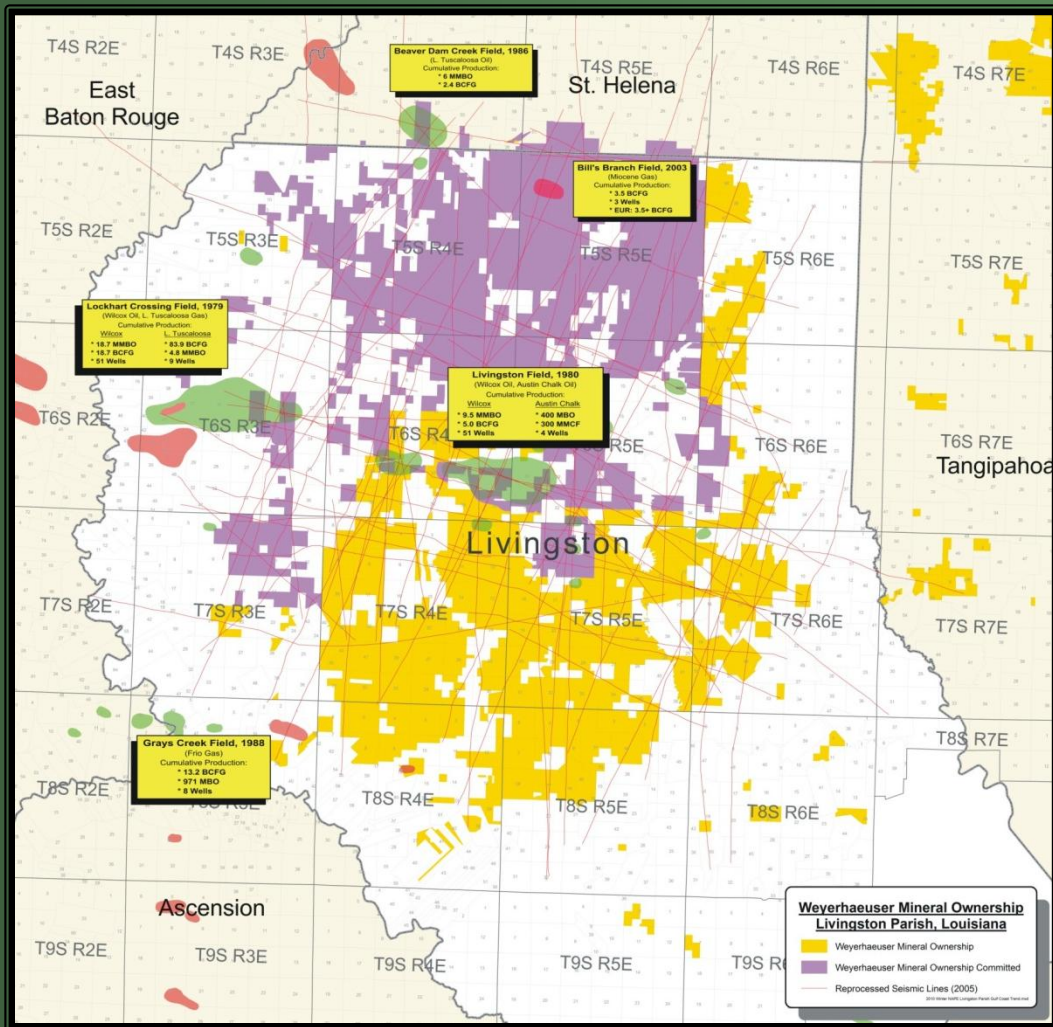




Weyerhaeuser

Gulf Coast Producing Trend Livingston Parish, Louisiana



Weyerhaeuser Assets:

- 60,000 acres
Austin Chalk Horizontal Play leads
- Frio gas prospects
- Lower Tuscaloosa leads
- Wilcox oil prospects/leads
- 3,000 miles 2D Seismic (1,000 miles reprocessed)

Suggested Terms:

- Option Terms:
 - \$10/ac bonus
 - 18 month term
 - Extension based upon 3D work commitment
 - Minimum lease commitment: 1,000 ac
- Lease Terms (if selected under Option):
 - \$50/ac bonus
 - 22.5% royalty
 - 3 year term

This information is not intended to be and should not be interpreted to be an exclusive offer to your company. Unless and until an Option/Lease Agreement or binding letter of intent has been executed between your company and Weyerhaeuser, neither your company nor Weyerhaeuser will be under any legal obligation whatsoever to conclude a transaction. Weyerhaeuser reserves the right, at its sole discretion, to reject any and all offers and to terminate discussions concerning a potential transaction at any time without liability or obligation of any nature whatsoever.

Contact: Pamela J. Reed, Land Manager, at (253) 924-2212 or Larry Dunn, Sr. Staff Landman, at (253) 924-2050

Executive Summary – Gulf Coast Trend Acreage, Livingston Parish, LA

Opportunity:	Contiguous, 60, 000 acre block, with multiple producing horizons to be enhanced with 3D seismic data.
Play Concept(s):	Wilcox and L. Tuscaloosa Oil on Growth Fault Traps Austin Chalk on Fracture Enhanced Growth Faults Miocene/Frio Gas and Oil from Seismic Bright Spots and Growth Fault Traps
Drill Depth(s):	Miocene/Frio, 5,500' to 10,000' Wilcox, 11,500' Austin Chalk 15,000' L. Tuscaloosa, 19,000''
Reservoir Targets:	Production in Livingston Parish has been established from multiple reservoirs including the Miocene, Frio, Wilcox, Austin Chalk, and L. Tuscaloosa.

Geologic Overview

The majority of production in Livingston Parish has been the result of exploration for Wilcox marine bar sandstones and deeper L. Tuscaloosa delta front sandstones trapped on growth faulted anticlines. Recently reprocessed 2D depicts Wilcox and Lower Tuscaloosa growth fault leads with similar potential to the prolific Lockhart Crossing Field (23 MMBO & 93 BCFG), and the Livingston Field (9.4 MMBO & 5 BCFG, Wilcox only). These subtle structures could be enhanced even further with acquisition of a 3D seismic data set.

Exploration for the Austin chalk in the 80's resulted in 5 completed wells that have produced 411,000 BO to date. Previous exploration targeted structure highs; however the key to this play is identifying and intercepting the formation where it has a high fracture density. Utilizing 3D seismic data to identify fracture sweet spots and improved horizontal drilling/stimulation techniques would enhance the chance of success.

Secondary reservoir targets consist of shallower Miocene and Frio shore face/marine bar sandstones trapped by pinch-outs, differential compaction, and on growth faulted anticlines.

Data Summary

- 3,000 miles 2D seismic with full proprietary rights
- 1000+ miles reprocessed 2D seismic in 2006
- Complete well log files, and multiple vintage prospects/interpretations