

Former Weyerhaeuser Box Plant

1901 E. 22nd Street, Little Rock, AR

FOR SALE

\$1,995,000
\$12.16/SF

- Rail siding with 6 doors
- I. T. room with Liebart
Uninterrupted power source
- 8± acres across 22nd Street
also included in price
- 2,625 SF loading dock
(15' x 175')
- Small mezzanine in
manufacturing area
- Conference room for 20;
Training room and Vault
- 16' – 20' clearance in
manufacturing/distribution
space
- Approx. 34,000 SF of 24'
clearance in warehouse
- 2007 Effective
(Industrial) Property Tax Rate
of 1.373%



164,000± SF
Industrial Building with 15 acres

Contact Information

Stuart Mackey CCIM, SIOR

stuart.mackey@ColdwellBanker.com

Phone: (501) 978-4965



Hathaway Group

All information contained herein has been obtained from sources deemed reliable. However, no warranty or guarantee is made as to the accuracy of the information.

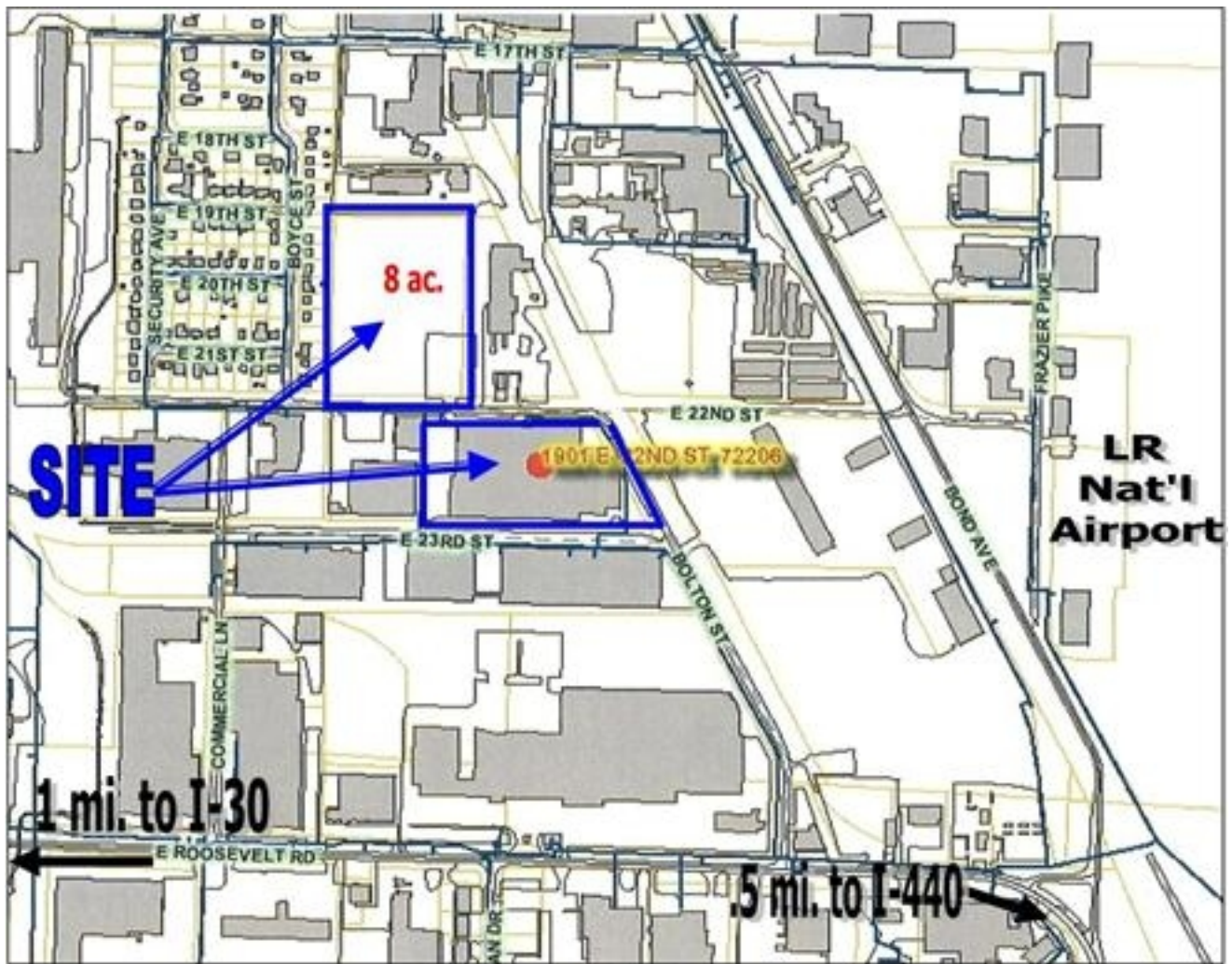
<http://www.hathawaygroup.com>

#4131

2100 Riverdale Rd. Suite #100, Little Rock, AR 72202

© 2008 Coldwell Banker Real Estate LLC. Coldwell Banker Commercial® is a registered trademark licensed to Coldwell Banker Real Estate LLC. An Equal Opportunity Company. Each Office Is Independently Owned And Operated

(501) 663-5400



1901 E. 22nd Street
Little Rock, AR

