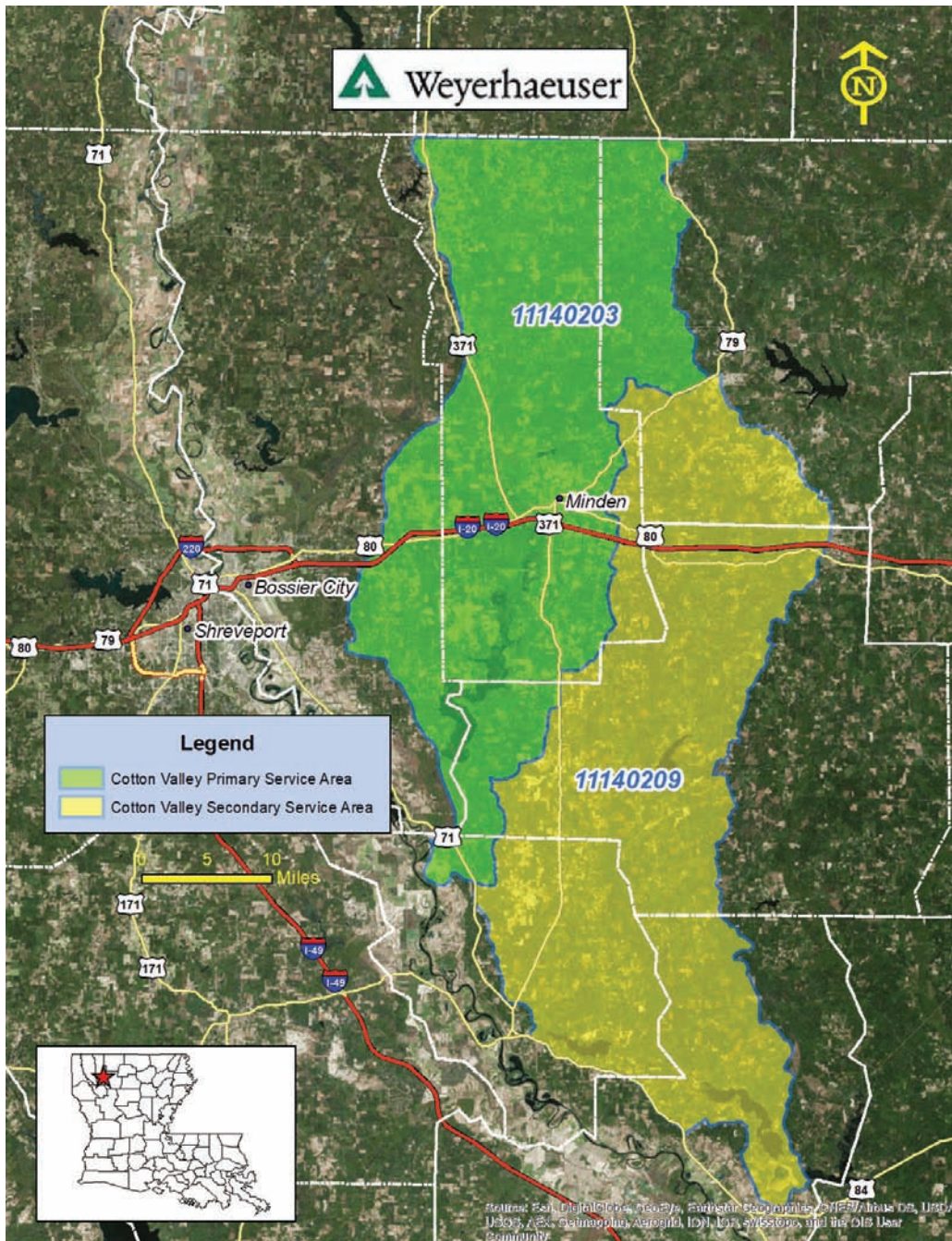


# Bank: COTTON VALLEY - *Bottomland Hardwood and Stream*



**Location:** Webster Parish, LA

**Acreage:** +/- 678 acres

**Purpose:** Restoring 206 acres of wetland and 20 acres of upland buffer; enhancing 87 acres of wetland from intensively managed pine plantations to native bottomland hardwood, along with preserving 259 acres of bottomland hardwood; enhancing 68 acres, or 18,696 linear feet of stream, along Bayou Dorcheat

### Primary HUC:

**11140203** (Loggy Bayou)

**11140209** (Black Lake Bayou)

### Sales and Marketing Contact:

**Daniel S. Coggin**

Coggin Asset Management, LLC

[daniel@cogginassetmanagement.com](mailto:daniel@cogginassetmanagement.com)

662.825.0058

