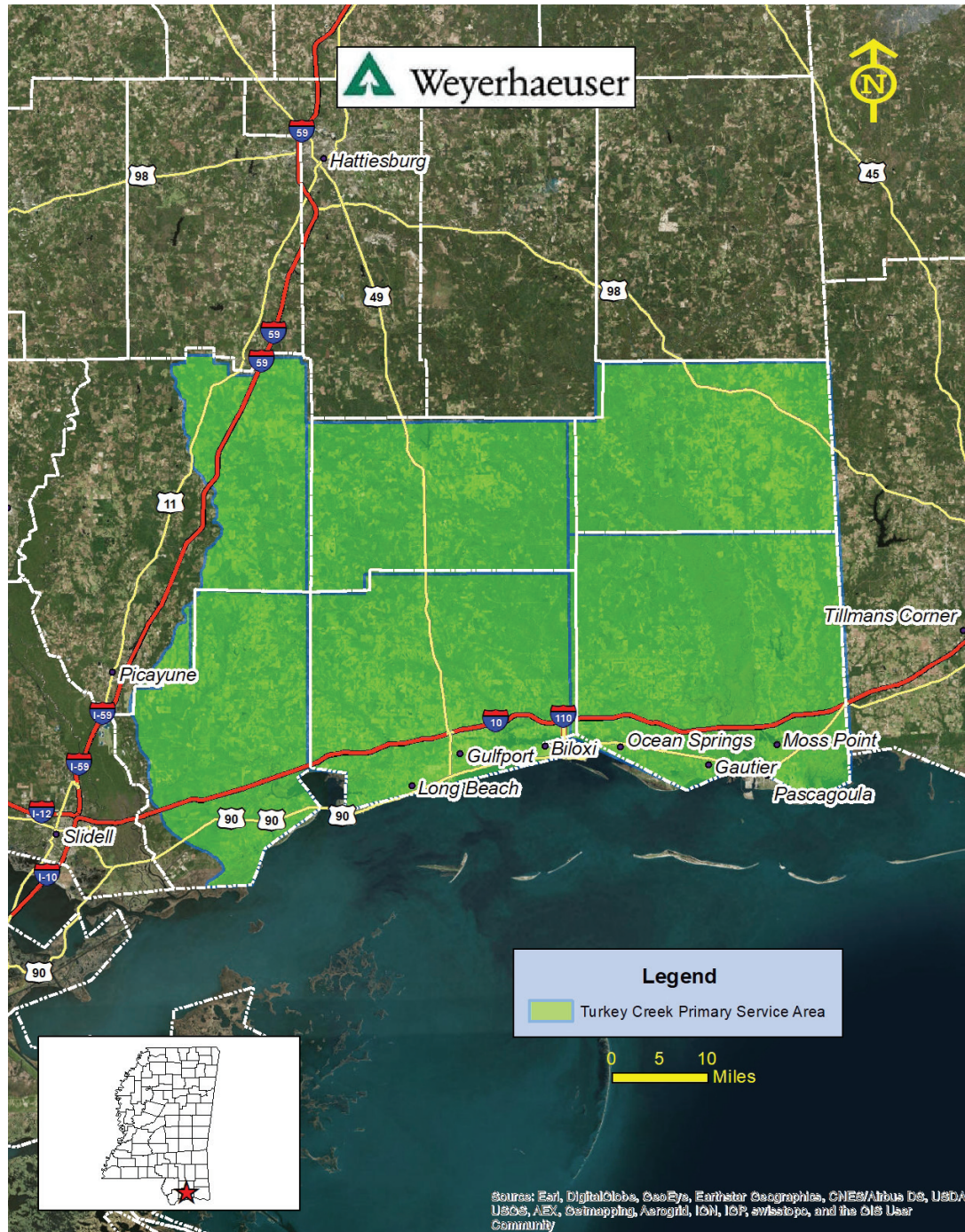


Bank: TURKEY CREEK - *Pine Savannah and Bottomland Hardwood*



The Turkey Creek Mitigation Bank services the six coastal counties and is comprised of wet pine savannah and bottomland hardwood wetlands encompassing approximately 238 acres. In addition to restoring 158 acres of intensively managed pine plantation back to wet pine savannah, 20 acres of existing bottomland hardwoods and 50 acres of upland pine savannah are also being enhanced or preserved.

State: Mississippi

Primary HUC: Six Coastal Counties of Mississippi located in Mobile District

Primary Service Area: Pearl River, Stone, George, Jackson, Harrison and Hancock Counties



Weyerhaeuser