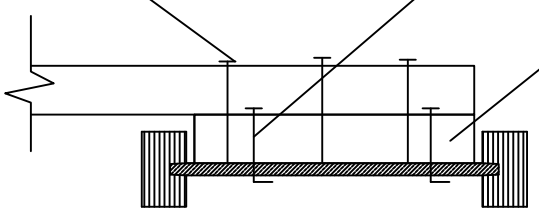


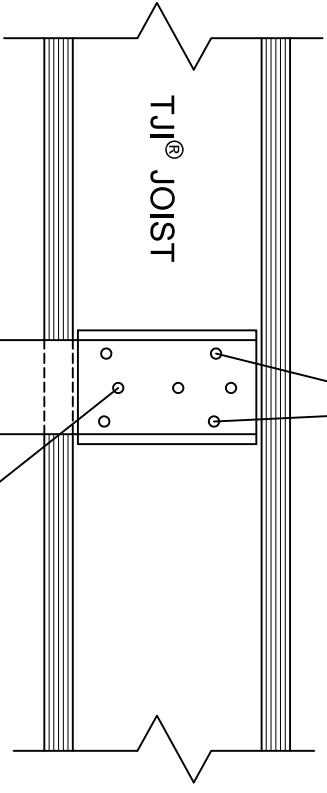


We warrant that the drawings and specifications are true and correct as of the date of issue. We do not warrant that the drawings and specifications are complete or that the information provided is sufficient for the intended use. This warranty is made on the condition that the drawings and specifications are used as intended and that the contractor is responsible for any errors or omissions. We are not responsible for any damage or injury resulting from the use of these drawings and specifications. Copyright © 2013 Weyerhaeuser Corporation. All rights reserved. Weyerhaeuser and the Weyerhaeuser logo are registered trademarks of Weyerhaeuser Corporation. All other trademarks are the property of their respective owners.

SECTION VIEW



SIDE VIEW



2x6 TIMBERSTRAND® LSL OR EQUIVALENT BLOCK WITH GRAIN ORIENTED VERTICALLY AND A MINIMUM 1/8" GAP BETWEEN BLOCK AND TOP & BOTTOM FLANGE.

USE (4) 8d PNEUMATIC NAILS (0.131"x3"), CLINCHED TO SECURE 2x4

ATTACH A 2x4 TIMBERSTRAND® LSL OR EQUIVALENT TO THE BLOCK WITH (3) 8d PNEUMATIC NAILS (0.131"x3").
NOTE: RECOMMEND ROWS TO BE 3/4" APART, 2" SPACING BETWEEN ROWS.

THIS CONNECTION YIELDS A MAXIMUM OF 250lbs OF DOWNWARD FORCE. CLOSEST SPACING, 30" FROM NEAREST SIMILAR ATTACHMENT.

NOTE:
- MAXIMUM VERTICAL LOAD FOR ALL 9-1/2" DEEP JOISTS IS 200 lbs.
- JOIST MUST BE DESIGNED WITH THE ADDITIONAL POINT LOAD(S) APPLIED.

Trus Joist Product Technical Support
Phone: (888) 453-8358
Email: techsupport@weyerhaeuser.com

HANGING SOFFIT MATERIAL FROM TJI® JOISTS

EXPIRATION DATE:
01-01-2023

REV	DATE	COMMENTS
1	2016-02-08	Updated TitleBlock (JM)

PROJECT #:
SERVICE #:
SHEET:
NW-D213