



Fantastic Facts

Sustainable Forestry



100% of our timberlands are **reforested** after harvest.



We plant more than **100 million trees** each year.



We harvest **only 2%** of our forests each year on average.



We certify **100%** of our Timberlands and wood products facilities to **Sustainable Forestry Initiative®** standards.



We plan our sustainable forest management activities on at least a **100-year horizon**, sometimes mapping as far out as **200 years** to ensure our forests last forever.

Wildlife & Habitat



We have **nearly 100 scientists, researchers and technicians** across our company helping to study the forest ecosystems in our care, covering everything from water quality and wildlife habitat to forest health and climate resilience.



We work with **more than 20 different conservation partners** across the U.S. to develop programs to expand public access, protect critical habitat and preserve sites of environmental, cultural and historical significance.



We **regularly assess our sites** for habitat for sensitive species and take appropriate management actions to ensure our forests and managed lands support a high level of biodiversity.



We participate in more than **50 conservation agreements** and collaborative efforts that address specific habitat needs of at-risk or sensitive species across our timberlands.



We **carefully maintain tree and plant buffers** along waterways to protect water quality and biodiversity.

Climate



We have an ambitious target to **reduce our scope 1 and 2 greenhouse gas emissions by 42% by 2030.**



We **removed** the equivalent of **31 million metric tons of CO₂** in our forests and wood products in 2025. That's like taking 7 million cars off the road.



We are a member of the **S&P Global Sustainability Yearbook 2026.**



Sustainability Fantastic Facts

Renewables



On average, we meet **more than two-thirds** of our own energy needs using renewable biomass.



Wind energy projects on our land can generate nearly **600 megawatts** of renewable energy, enough to power **176,000 homes a year**.



On average, **99% of our wood by-products** are used to create other products or to generate energy.



Once harvested, our trees are turned into a range of products essential to everyday life. Most of the wood goes into **lumber, engineered wood and panels** used to build **residential homes**, and also to make products such as **paper, packaging, toothpaste and tissue**.



We supplied **1.6 million tons of wood fiber** from our harvest residuals and mill by-products to generate renewable energy in 2025.

Social Responsibility



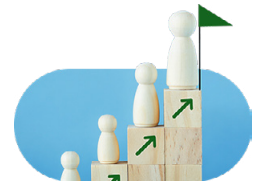
In 2025, our employees volunteered **over 24,000 hours** of their time to causes they care about.



800+ of our employees have joined our online mentoring platform, Growth Rings.



86% of our employees agree their work environment is inclusive.



More than 300 of our leaders participated in leadership training programs in 2025.



We engage with **more than 70 Indigenous groups** across Canada that overlap with the forests we manage.

Safety



Each operations site develops an annual risk-based safety plan that outlines their actions to reduce their highest risks. **In 2025, 93% of these risk reduction activities were completed.**



We use cutting-edge technology to improve safety and efficiency across our operations, including through **robotics and automation, drones, remote sensing** and more.