

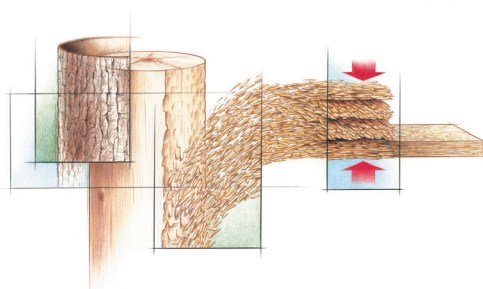
## FROM STARTER HOME TO DREAM HOME: QUALITY FOR ALL CONDITIONS



**For more than three decades, builders and homeowners have turned to Weyerhaeuser Edge™ oriented strand board (OSB) for a solid and stable residential floor system.**

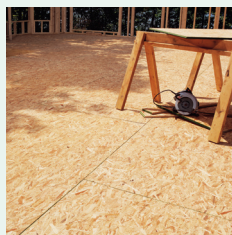
Our superior engineering protects against delamination, buckling, cupping, warping and sagging. That translates to less labor time, fewer callbacks and more satisfied homebuyers. Quality builders rely on Weyerhaeuser Edge™ engineered subfloor for several reasons:

- 25-year limited warranty (shown on reverse side)
- Fully sanded face for uniform thickness and a smoother surface
- Easy-fitting tongue-and-groove
- Every panel ships working-side up



### Building Green

From creating the nation's first tree farm in 1941 to planting more than 50 million seedlings every year, Weyerhaeuser understands what it means to be green. And, we've pioneered products and practices that help builders solve green construction challenges. On average, we use 95% of each log to produce wood products and energy. That means less waste to the landfill and more carbon storage on site and a healthier environment.



### Installation

With our engineered easy-fitting tongue-and-groove edges, installing a quality subfloor has never been easier. Pounding with a sledgehammer is not required, which reduces damage to panels during installation resulting in an overall better built floor system.



### No Warp, No Delamination

Rotary cutting of plywood veneers can result in a sloping grain, which can lead to warps when the panel is exposed to moisture. The presence of knots and core voids create inconsistencies which may result in delamination of the veneers. Through the use of strand technology, installing Weyerhaeuser Edge™ means you're choosing a material engineered to start flat, and stay flat resulting in fewer call backs and more satisfied homeowners.

# LIMITED 25-YEAR STRUCTURAL WARRANTY

## Weyerhaeuser Edge™ OSB Single-Layer Flooring



### What Is Covered?

Weyerhaeuser NR Edge™ flooring (Edge panels), when properly installed as single-layer flooring in a home, is warranted by Weyerhaeuser NR Company (Weyerhaeuser) against delamination for a period of twenty-five (25) years from the date of the original purchase of the home.

### Definition of Covered Conditions

Delamination is defined as an extensive separation of strands within a panel, which results in a reduction of the structural capacity of the panel. Minor localized edge checking or loose strands on the surface of the panel does not constitute delamination. This warranty does not cover the performance of Weyerhaeuser Edge™ panels outside the U.S. and Canada, or delamination due to:

- Prolonged exposure to water before, during, or after completion of construction.
- Fire, floods, or man-made or natural disaster.
- Manufacturing or construction defects in the home.
- Damage to or improper maintenance of the panel prior to or during installation.
- Noncompliance with installation instructions, applicable building code, or generally accepted construction practices.
- Damage to or improper maintenance of the finished floor covering.

### Note:

Delamination is not caused by wood fungal decay or rot. Like any wood product, all wood-based panels may be at risk for fungal decay or rot when exposed to repeated wetting or high moisture environments, particularly if not properly ventilated. For this reason, manufacturing, design, and use features must ensure Weyerhaeuser Edge™ panels are protected from such exposure by appropriate finish coverings for floor and wall systems. This warranty does not cover mold, fungal decay, or rot.

### What Weyerhaeuser Will Do

For delamination covered by this warranty, Weyerhaeuser will pay for the repair or replacement of the single-layer flooring (excluding removal and replacement of cabinetry). This includes the single-layer flooring and floor covering at wholesale cost, and the reasonable cost of labor. Weyerhaeuser's total liability will not exceed the original cost of the floor and the reasonable cost for removal of existing flooring materials.

### What You Must Do

You must notify Weyerhaeuser in writing of any claim under this warranty within thirty (30) days of the discovery of warranted delamination at the following address:

Weyerhaeuser Product Assurance Group  
33663 Weyerhaeuser Way South  
Federal Way, Washington 98003  
1-253-924-5214

Upon request, you must provide Weyerhaeuser with reasonable proof of product identification in the form of a panel sample, a photograph of the large identifying stamp on each panel, or dated receipt.

A Weyerhaeuser representative must be given the opportunity to inspect the floor prior to any alteration, change, or repair.

### Incidental or Consequential Damages

Weyerhaeuser's sole responsibility for delamination is as set forth in this warranty and Weyerhaeuser will not be responsible for incidental, indirect, or consequential damages. Some states and provinces do not allow the exclusion or limitation of incidental or consequential damages, so the above limitation or exclusion may not apply to you.

### State Law Rights

This warranty gives you specific legal rights, and you may also have other rights, which vary from state to state and province to province.