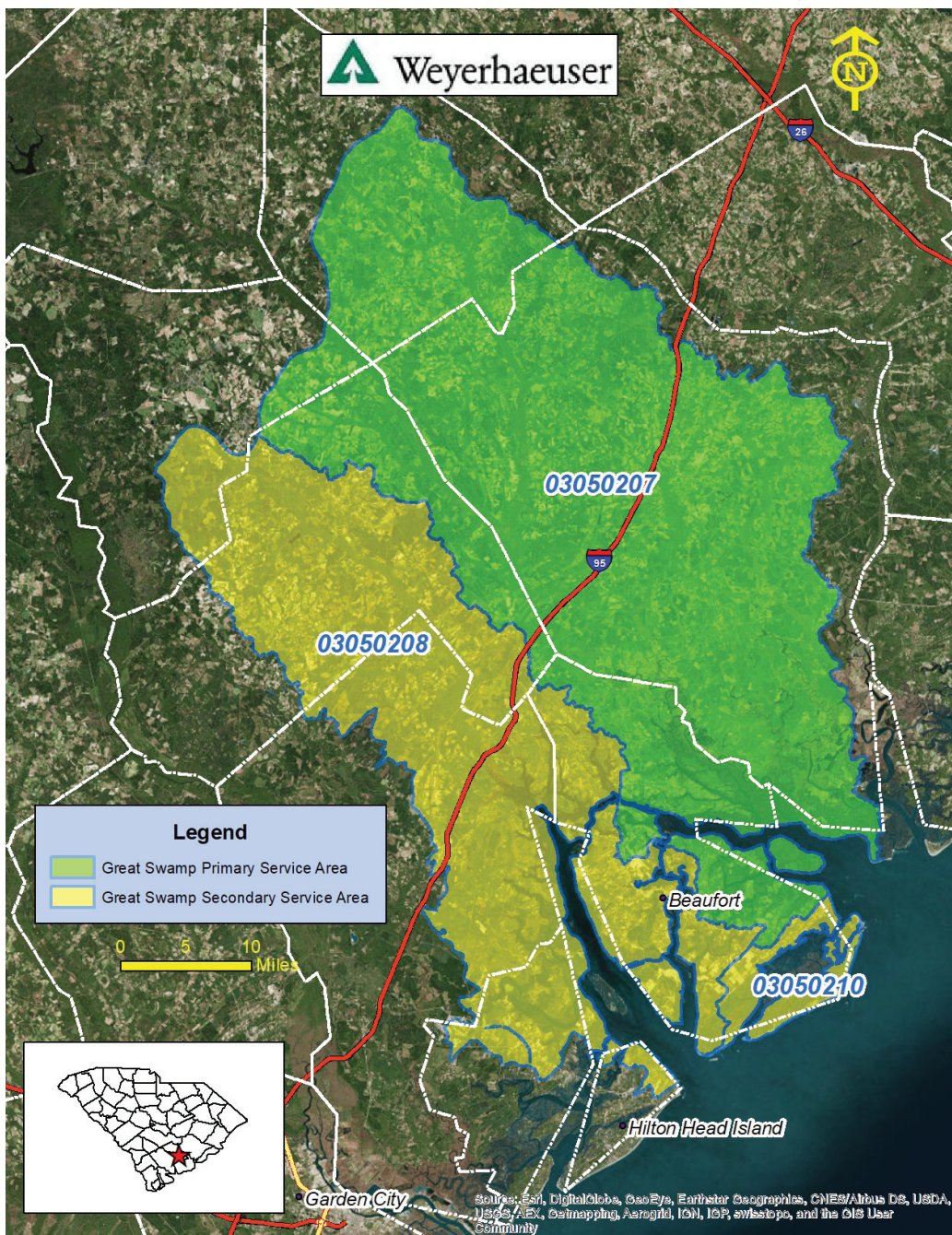


Bank: GREAT SWAMP (PROPOSED) - *Freshwater Enhancement/Restoration and Stream*



The proposed Great Swamp Mitigation Site is another site to be added to the Palmetto Umbrella Mitigation Bank. It is located in Colleton County and comprises approximately 2,000 acres. The site is located within the headwaters of the Ashepoo River, which is in a sub-basin of the Salkehatchie River Basin. This 91,357-acre watershed includes Jones Swamp Creek and Doctors Creek, which form the Great Swamp. Great Swamp joins Ireland Creek to form the Ashepoo River. The site is unique in that it contains many historical rice fields. Mitigation efforts will result in the restoration, enhancement and/or preservation of approximately 1,300 acres of freshwater wetlands and 44,000 linear feet of streams.

State: South Carolina

Primary HUC: 03050207

Primary Service Area: Salkehatchie River

Secondary HUC: 03050208

Secondary Service Area: Broad-St. Helena

Secondary HUC: 03050210

Secondary Service Area: St. Helena Island

