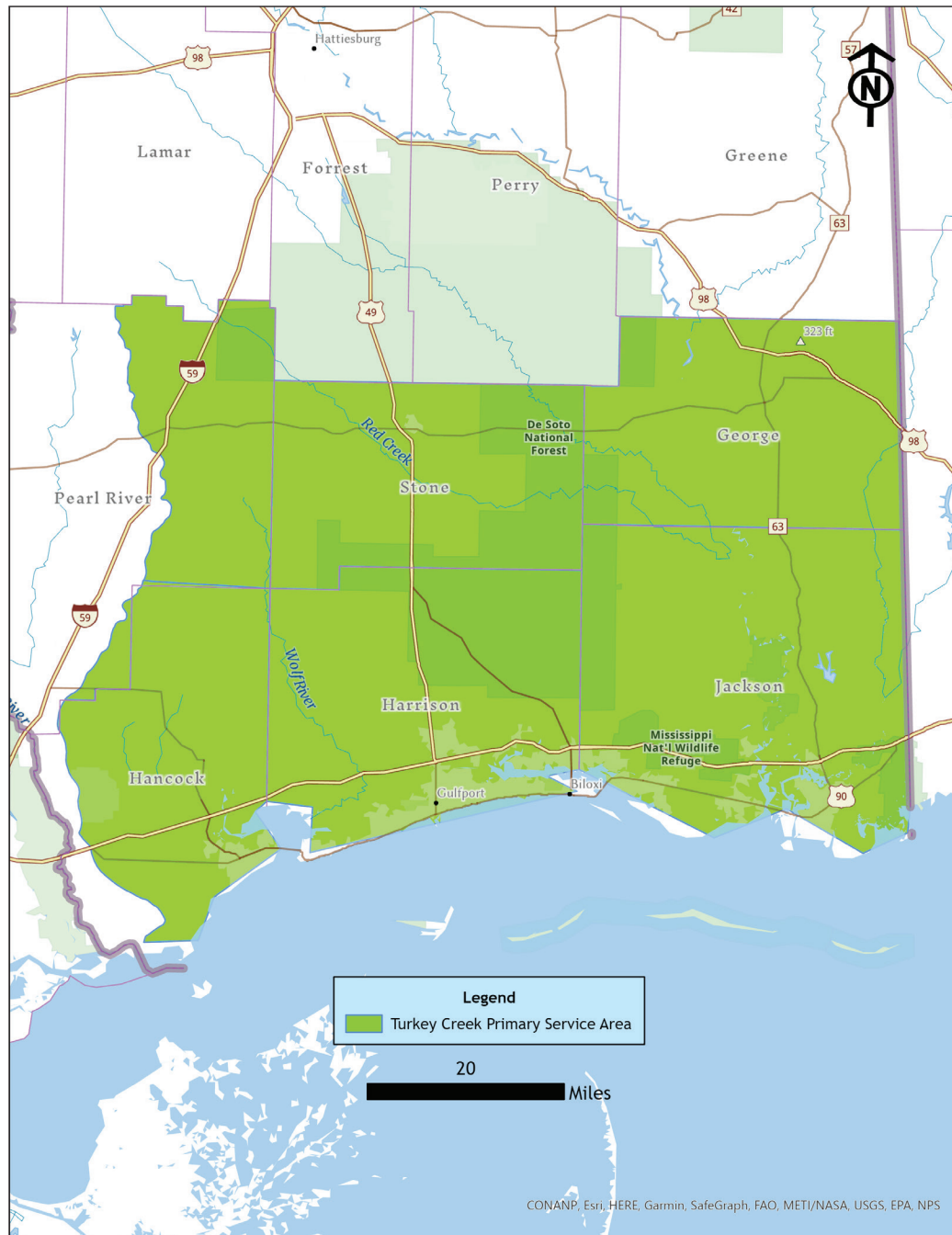


Bank: TURKEY CREEK - *Pine Savannah and Bottomland Hardwood*



Location: Mississippi's six coastal counties

Acreage: +/- 238 acres

Purpose: Restoring 158 acres of intensively managed pine plantation back to wet pine savannah, 20 acres of existing bottomland hardwoods and 50 acres of upland pine savannah

Primary HUC:

Six Coastal Counties of Mississippi located in Mobile District

(Pearl River, Stone, George, Jackson, Harrison and Hancock Counties)

Sales and Marketing Contact:

Daniel S. Coggin

Coggin Asset Management, LLC

daniel@cogginassetmanagement.net

662.825.0058

