

# TURKEY CREEK MITIGATION BANK



The Weyerhaeuser Turkey Creek Wetland Mitigation Bank is a 238-acre site located in southwest Harrison County, Mississippi. The Bank is located within the Turkey Creek Watershed and has Pine Savanna and Bottomland Hardwood Credits available for purchase.

## ABOUT MISSISSIPPI'S LONGLEAF SAVANNAS

With less than five percent of the original wet pine savanna habitat remaining in the Atlantic/Gulf Coastal Plain Region, Mississippi's longleaf pine savannas are one of the most endangered ecosystems in the state and one of the most endangered ecosystems in the country. Covering almost 80,000 acres in Mississippi, the lack of fire, conversion to commercial pine plantations and the urbanization of Mississippi's coastal counties have all contributed to the drastic decline of the wet pine savanna habitat in the state. The last large vestiges of wet pine savanna habitat can be found on public lands such as the Sandhill Crane National Wildlife Refuge and the Grand Bay National Wildlife Refuge.

The Turkey Creek Wetland Mitigation Bank is a means in which Weyerhaeuser is preserving and protecting Mississippi's longleaf ecosystems.



## CREDIT PRICING AND AVAILABILITY

Coggin Asset Management, LLC

Phone: 662-825-0058 | Email: [danielcoggin@att.net](mailto:danielcoggin@att.net)

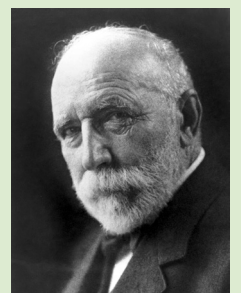
For more information visit:

[www.weyerhaeusermitigation.com](http://www.weyerhaeusermitigation.com)



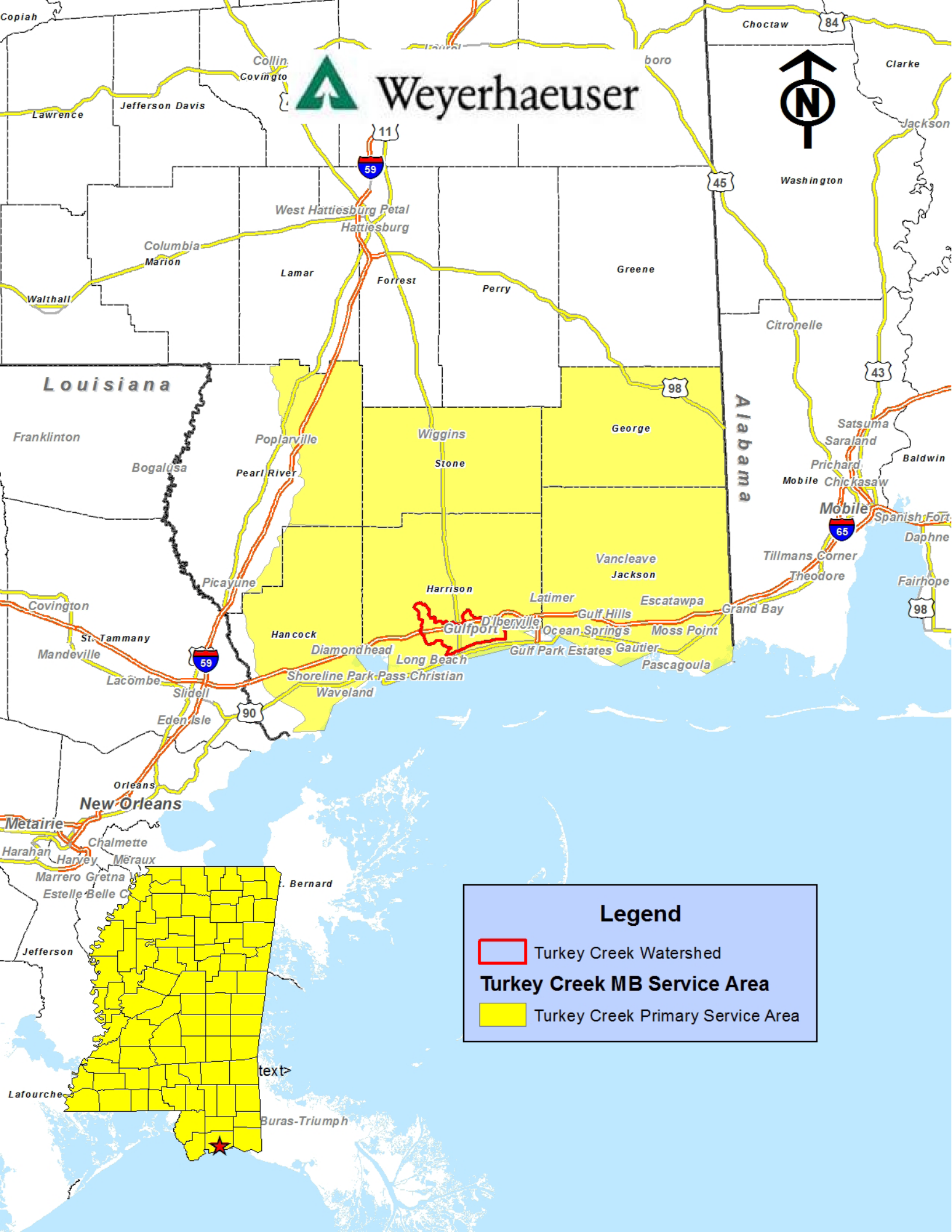
## OUR COMMITMENT TO THE PLANET

Weyerhaeuser brings unparalleled expertise and knowledge to the wetland mitigation world. Our commitment to sustainability goes all the way back to our founding in 1900, when Frederick Weyerhaeuser said, *"This is not for us, nor for our children—but for our grandchildren."* That sincerity of purpose lives on today in our ongoing commitment to restoring and protecting our nation's wetlands.







# Weyerhaeuser



**Legend**

-  Turkey Creek Watershed
- Turkey Creek MB Service Area**
-  Turkey Creek Primary Service Area