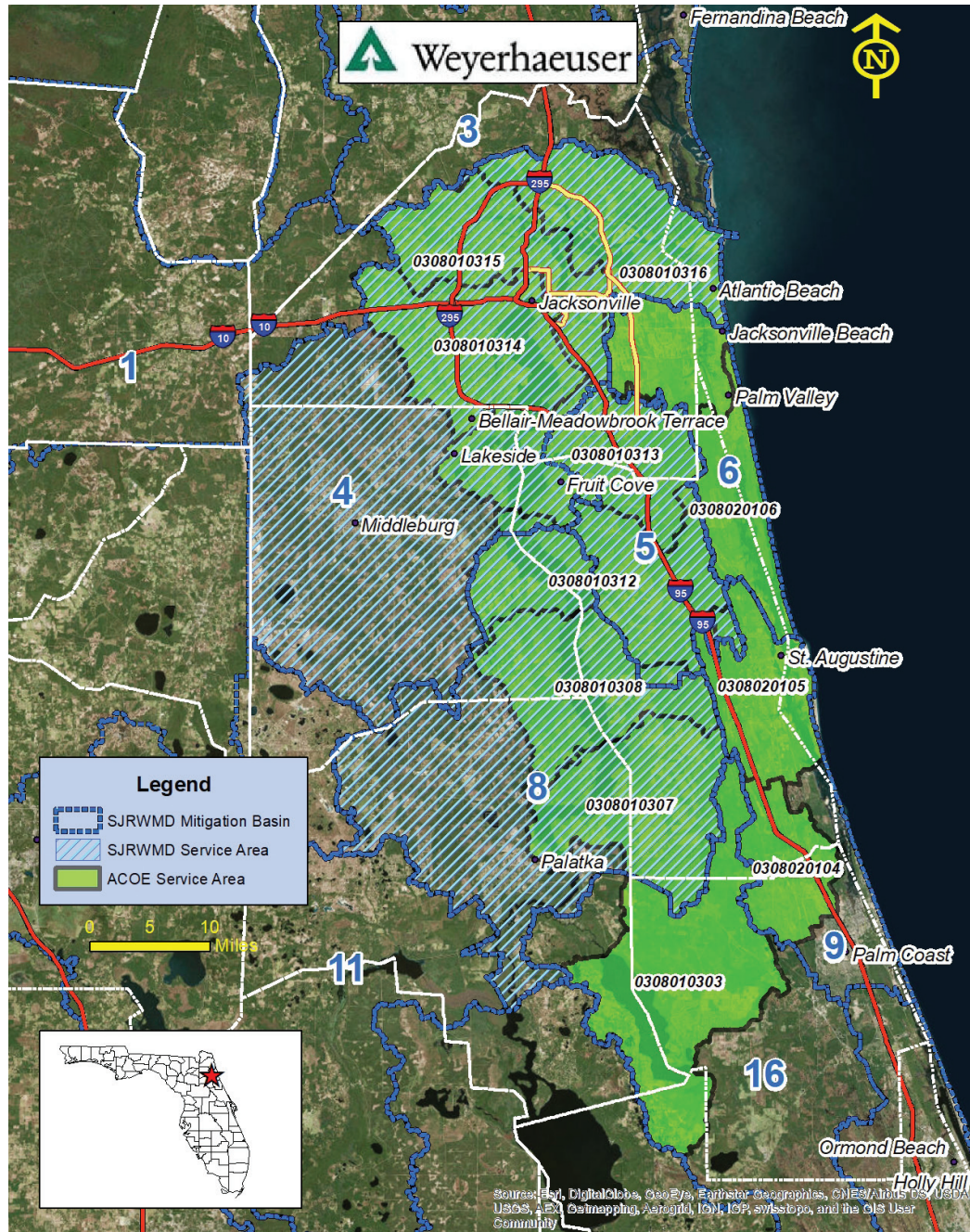


Bank: ST. JOHNS - *Palustrine Forested*



St. Johns is a 3,580-acre site located in St. Johns County. Mitigation efforts used to restore the historic conditions of the bank focus on the enhancement of approximately 3,110 acres of mesic flatwoods, wet flatwoods, basin swamp, bottomland hardwoods and approximately 430 acres of uplands.



State: Florida

FEDERAL UMAM CREDITS

Primary HUC: 30801031601

Primary Service Area: Broward River

Primary HUC: 308010315

Primary Service Area: Trout Creek-St. Johns River

Primary HUC: 308010314

Primary Service Area: Ortega River-St. Johns River

Primary HUC: 30801031602

Primary Service Area: Big Island Swamp

Primary HUC: 30801031604

Primary Service Area: Upper Pablo Creek

Primary HUC: 308010310

Primary Service Area: North Fork of Black Creek

Primary HUC: 308010309

Primary Service Area: South Fork of Black Creek

Primary HUC: 308010311

Primary Service Area: Black Creek-St. Johns River

Primary HUC: 308010313

Primary Service Area: Doctors Lake-St. Johns River

Primary HUC: 308010312

Primary Service Area: Palmo Cove-St. Johns River

Primary HUC: 308010308

Primary Service Area: Clarks Creek-St. Johns River

STATE UMAM CREDITS

St Johns River Water Management District

Basins 4, 5 and 8: See Map



Weyerhaeuser