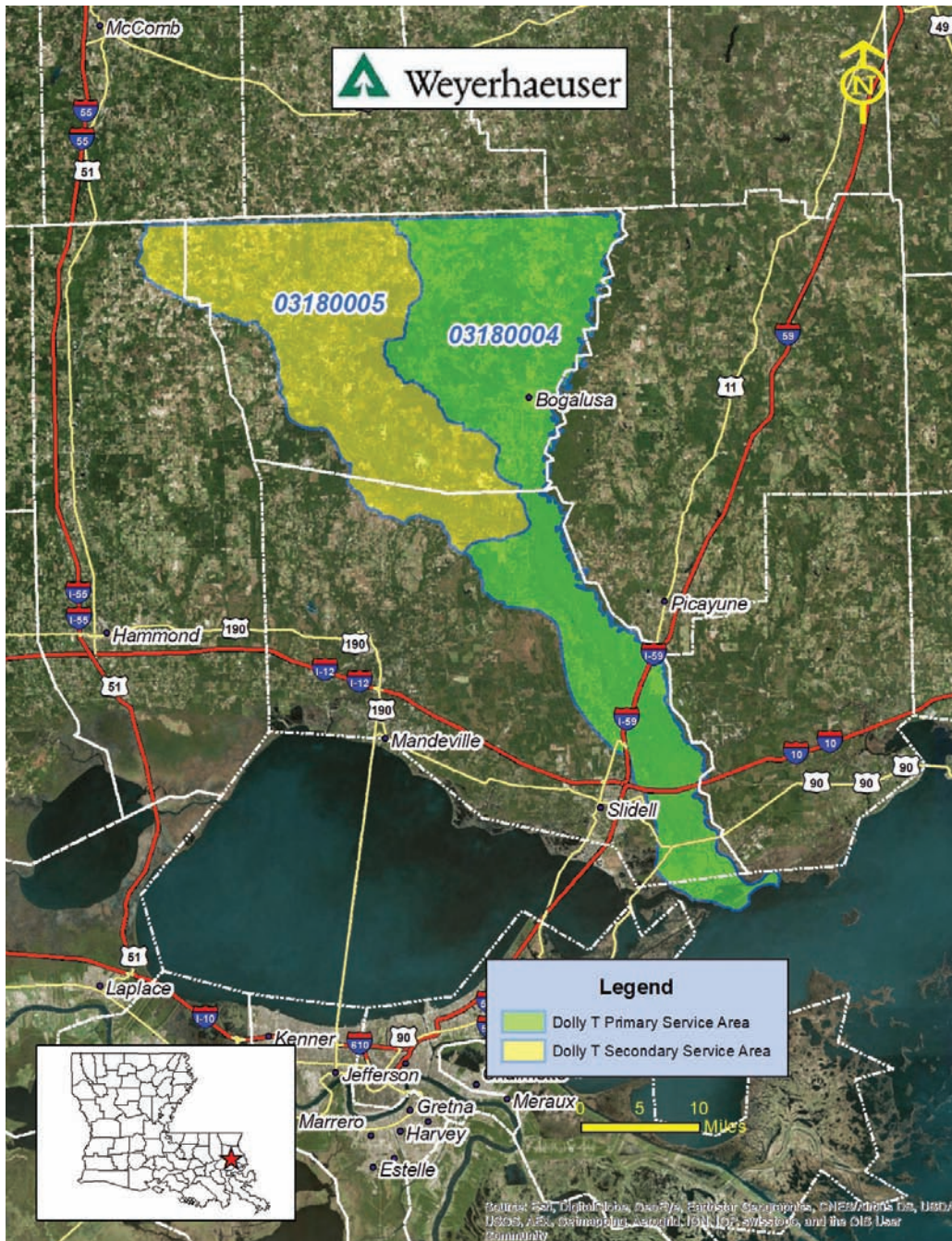


# Bank: DOLLY T - Pine Savannah



**Location:** St. Tammany Parish, LA

**Acreage:** +/- 1,473 acres

**Purpose:** Restoring 1,159 acres of intensively managed pine; enhancing 215 acres of existing bayhead swamp wetlands, 69 acres of cypress/hardwood flat wetlands and 30 acres of uplands

### Primary HUC:

**03180004** (Lower Pearl)

**03180005** (Bogue Chitto)

### Sales and Marketing Contact:

Andrew J. Harrison, Jr.  
Wetland Mitigation Strategies, LLC  
ajh@ajharrisonlaw.com  
225.907.3380

