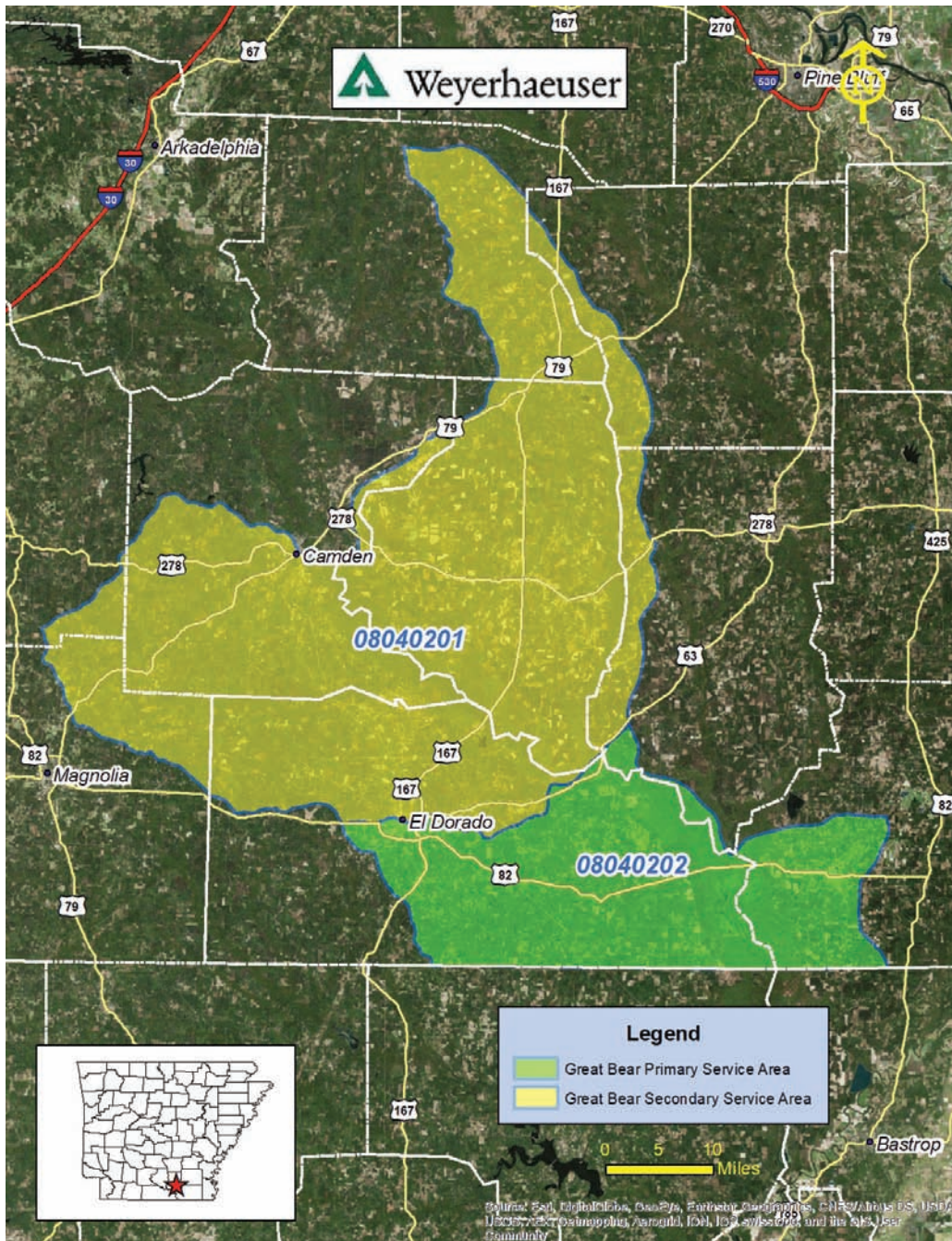


# Bank: GREAT BEAR - *Bottomland Hardwood*



**Location:** Ashley County, AR

**Acreage:** +/- 514 acres

**Purpose:** Restoring 439 acres of bedded pine plantations to native bottomland hardwoods, along with 51 acres of upland buffer, to a mixed pine and hardwood forest; preserving 17 acres of existing bottomland hardwood forest

### Primary HUC:

**08040202** (Lower Quachita-Bayou De Loutre)

**08040201** (Lower Quachita-Smackover)

### Sales and Marketing Contact:

**Daniel S. Coggin**

Coggin Asset Management, LLC

daniel@cogginassetmanagement.com

662.825.0058

