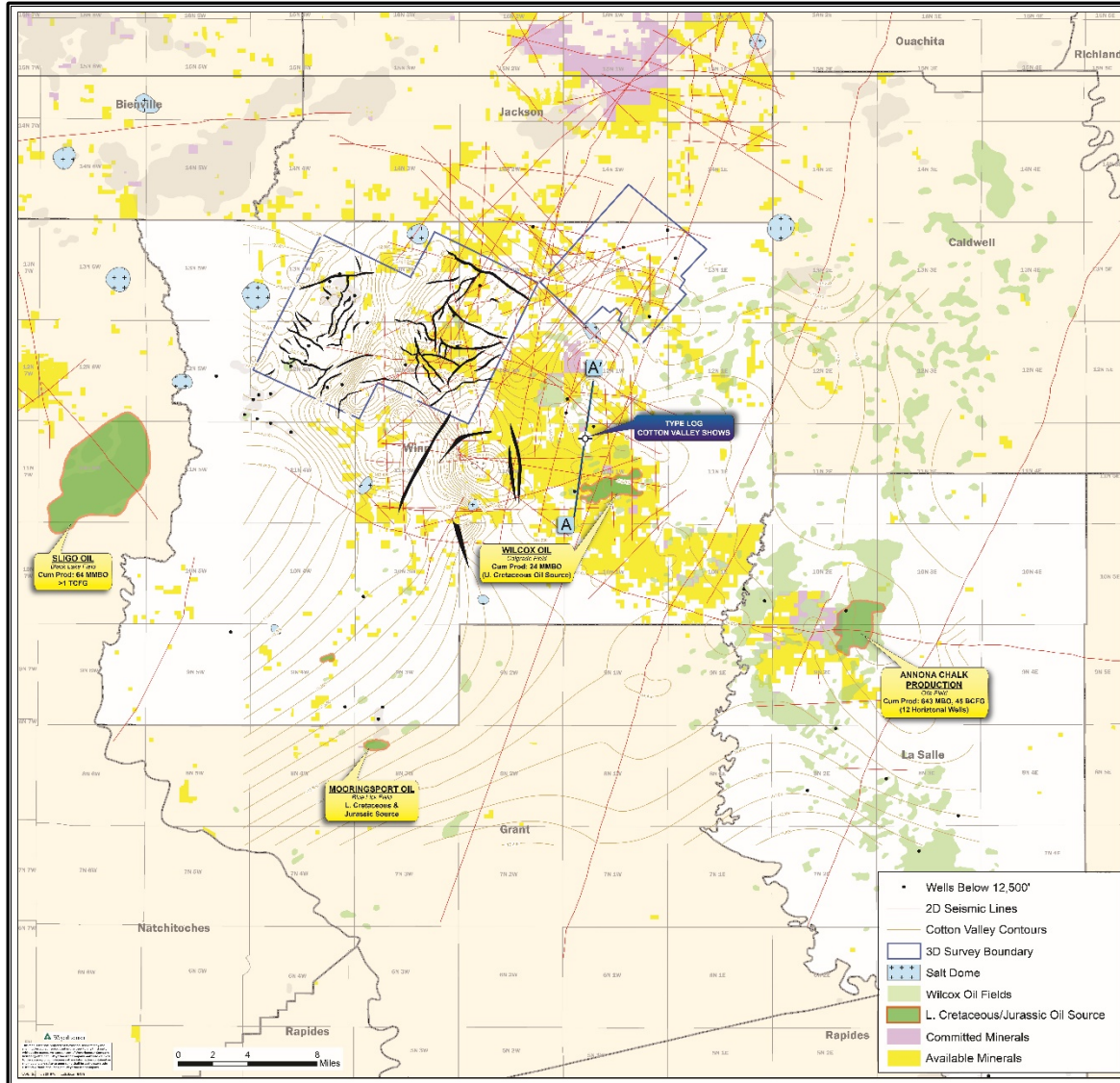


Winn & LaSalle Parishes, Louisiana

100,000+ acres



Suggested Deal Terms:

- Option with minimum size of 10,000 acres
- Minimum Lease Commitment: 10% of Option area
- Option and Lease terms may be offset with 3D seismic commitment

Technical Presentation Available Upon Request

This information is not intended to be and should not be interpreted to be an exclusive offer to your company. Unless and until an Option/Lease Agreement or binding letter of intent has been executed between your company and Weyerhaeuser, neither your company nor Weyerhaeuser will be under any legal obligation whatsoever to conclude a transaction. Weyerhaeuser reserves the right, at its sole discretion, to reject any and all offers and to terminate discussions concerning a potential transaction at any time without liability or obligation of any nature whatsoever.

Contact: Phillip Blower
Land Manager – Energy & Natural Resources
(206) 539-4103

Phillip.Blower@Weyerhaeuser.com

Executive Summary: Cotton Valley, Calvin and Knowles Potential

Play Concepts: The Eocene (Wilcox), Upper Cretaceous (L. Tuscaloosa & Annona Chalk), Lower Cretaceous (Glen Rose, Mooringsport, Rodessa, James, Sligo, & Hosston) and Jurassic intervals (Calvin, Bossier & Knowles) are productive and prospective on the 100,000+ acre mineral block.

Drill Depth: 1,500'–20,000' MD

Reserve Potential: Oil and Gas with multiple TCFGE

Prospects & Leads: Weyerhaeuser has developed prospects and leads in most of the prospective formations on the mineral block.

Examples:

Wilcox (1,500'–4,000' PTD): Wilcox oil production is widespread on Weyerhaeuser's Winn/La Salle Parish mineral block. A possible un-tested Wilcox structural high has been identified on reprocessed 2D seismic data.

L. Tuscaloosa Channel Lead (6,500' PTD): Reprocessed 2D data shows a very bright amplitude in the L. Tuscaloosa Formation with a possible up-dip trap.

N. Colgrade Prospect (Sligo 10,200' PTD): Reprocessed (2006) 2D seismic data and well control was utilized to develop the N. Colgrade Prospect. Seismic data shows a strong trough amplitude that is coincident with a faulted structural high. The seismic amplitude is very similar to reprocessed 2D seismic over Black Lake Field (1 TCFG + 64 MMBO) located 25 miles due west of the prospect. At Black Lake a strong trough amplitude coincides with the main productive reef/grainstone interval developed at the very top of the Sligo Formation.

SE Dodson Prospect (Calvin & Knowles 14,200' PTD): Re-drill of a potential gas productive Calvin Ss interval (1.1 MMCFGPD on test) and Knowles Ls interval (1.6 MMCFGPD on test) that was not completed due to poor cement around production casing.

Deep Cotton Valley (17,000' PTD): The only deep well on the block, the Amoco CZ 5-7, sec. 5-11N-1W; encountered significant overpressure and gas shows in the Cotton Valley Calvin, and basal Terryville/Bossier intervals. Evidence of this "pressure cell" suggests the potential for a tight gas sand/shale play.

3D Seismic Data: 25% of Weyerhaeuser's Winn/La Salle Parish mineral block is covered by 3D seismic. With production established from 1,500'-14,000' it is probable that additional reserves would be found with broader 3D seismic coverage.

