

CHOOSING ENGINEERED PANELS OVER PLYWOOD



Yes, it's true.

Plywood and oriented strand products share many of the same strength and performance characteristics. Both are made by pressing and bonding wood together, and both are commonly sold in a range of similar sized sheets.

But ask yourself, why is it that OSB is the market leader for subflooring material, with estimates putting its market share as high as 75%? Created in 1993, Weyerhaeuser Edge Gold™ is the original, and longest continually produced, enhanced subfloor product on the market.

Here are just a few of the reasons to choose Weyerhaeuser Edge Gold™ over plywood.

It's a Matter of Science!

Plywood uses PF (phenol formaldehyde) in its core to create a mechanical bond between large veneers of wood. Edge Gold™, however, uses MDI (methylene diphenyl diisocyanate) in its core which penetrates deep into cracks, cell lumen and even cell walls, to create a stronger bond that welds strands with precise dimensions together. The combination of MDI (instead of PF) and strands (instead of veneer), is a big reason why we can warranty against delamination,* while plywood has no such protection.

✓ Value

With possible savings of 10–20% over similarly sized plywood panels, using Edge Gold™ as the primary subfloor may save you money!

✓ No Warp, No Delamination

Rotary cutting of plywood veneers can result in a sloping grain, which can lead to warps when the panel is exposed to moisture. In addition, the presence of knots and core voids create inconsistencies which may result in delamination of the veneers. Through the use of strand technology, installing Edge Gold™ means you're choosing a material engineered to start flat, and stay flat.

✓ Consistency

All engineered strand products (such as Edge Gold™) are free from natural defects like knots that can cause core voids within the panel. These defects can cause weaknesses in the plywood...so remember that next time you drive a nail into the floor!

✓ Environmental

Edge Gold™ uses nearly the whole tree! Made of individual strands – manufactured from SFI certified, and sustainably harvested trees – we use more of the natural resource to make the quality wood subfloor beneath your feet!

✓ Installation

With our superior easy-fitting tongue-and-groove edges, installing a subfloor has never been easier. No pounding with a sledgehammer required!

✓ Unparalleled Warranty

We are so confident in our Edge Gold™ panels that we back them with a 200-day no sand guarantee, as well as a 50-year warranty against delamination!

* Warranty information available at woodbywy.com/library/#warranties

Continued on reverse



For Added Strength

In many markets, $\frac{3}{4}$ " Douglas Fir plywood is equivalent in price to $\frac{7}{8}$ " Edge Gold™. That means you could be installing a floor that's nearly twice as stiff¹, for the same price!

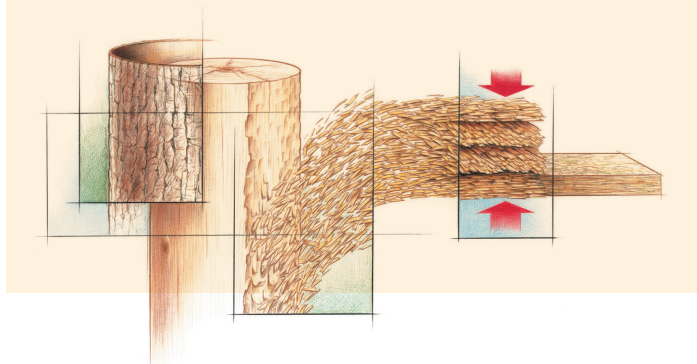
Designed Bending Stiffness (lbf-in ² /ft)	
$\frac{7}{8}$" OSB	$\frac{3}{4}$ " Plywood
650,000	330,000

In addition to the benefits of OSB, both $\frac{7}{8}$ " and $1\frac{1}{8}$ " Edge Gold™ also provides better nail retention than plywood, resulting in a superior subfloor for a variety of building applications



DID YOU KNOW?

Engineered strand products are manufactured in cross laminated layers similar to plywood. However, there is 8" of wood fiber pressed into every 1" of panel thickness...this gives engineered strand panels superior strength and stiffness!



Certified Sourcing
www.sfi-program.org
 SFI-00008

CONTACT US

888.453.8358 • woodbywy.com

1. Stiffness rating based off Rated Panel Design Capacities, APA - The Engineered Wood Association, Form No. D510C, Table 8, Pg. 21, May 2012; www.apawood.org

May 2015
Reorder OSB-4203

▲ and Weyerhaeuser are registered trademarks and Edge Gold is a trademark of Weyerhaeuser NR.
 © 2015 Weyerhaeuser NR Company. All rights reserved. Printed in the USA.