



LISTING INFORMATION OF
**Weyerhaeuser - Rim Board, TJ Rim Board, TJI Rim Joist,
and TimberStrand LSL**
SPEC ID: 39709

Weyerhaeuser NR Company
32901 Weyerhaeuser Way South
PO Box 6049 Federal Way, WA 98063-6049
Federal Way, WA 98001
United States

This report is for the exclusive use of Intertek's Client and is provided pursuant to the agreement between Intertek and its Client. Intertek's responsibility and liability are limited to the terms and conditions of the agreement. Intertek assumes no liability to any party, other than to the Client in accordance with the agreement, for any loss, expense or damage occasioned by the use of this report. Only the Client is authorized to permit copying or distribution of this report and then only in its entirety. Any use of the Intertek name or one of its marks for the sale or advertisement of the tested material, product or service must first be approved in writing by Intertek. The observations and test results in this report are relevant only to the sample tested. This report by itself does not imply that the material, product, or service is or has ever been under an Intertek certification program.

LISTING INFORMATION

Weyerhaeuser Rim Board, TJ Rim Board, TJI Rim Joist, and TimberStrand LSL are engineered wood products for use in rim board applications around the perimeter of engineered wood joists. Weyerhaeuser Rim Board and TJ Rim Board are 1-1/8 in. thick (wide) and are available in depths ranging from 9-1/2 to 16 in. TJI Rim Joist is TJI Joist with minimum flange thickness of 1-1/4 in. and width of 1-3/4 in., OSB web of 3/8 in. and depths ranging from 9-1/2 to 24 in. TimberStrand LSL is laminated strand lumber 1-1/4 to 3-1/2 in. thick (wide) and depths of 9-1/2 to 24 in. The products are installed according to the manufacturer's approved installation instructions as center-wall or end-wall fire-rated assemblies. The continuous rim board on top of the wall may be parallel with the floor joists or perpendicular to the joists.

FIRE RATINGS

Test Standard	Rating	Design Number
ASTM E119, CAN/ULC S101	1 Hour or 45 Minutes	WNR/RB 60-01
ASTM E119, CAN/ULC S101	1 Hour or 45 Minutes	WNR/RB 60-02
ASTM E119, CAN/ULC S101	1 Hour or 45 Minutes	WNR/RB 60-03
ASTM E119, CAN/ULC S101	1 Hour or 45 Minutes	WNR/RB 60-04
ASTM E119, CAN/ULC S101	1 Hour or 45 Minutes	WNR/RB 60-05
ASTM E119, CAN/ULC S101	1 Hour or 45 Minutes	WNR/RB 60-06
ASTM E119, CAN/ULC S101	1 Hour	WNR/RB 60-07
ASTM E119, CAN/ULC S101	1 Hour	WNR/RB 60-08
ASTM E119, CAN/ULC S101	2 Hours	WNR/RB 120-01

Attribute	Value
Criteria	CAN / ULC S101 (2007)
Criteria	ASTM E119 (2018)
Criteria	ASTM E119 (2016)
CSI Code	06 17 00 Shop-Fabricated Structural Wood
Listing Section	STRUCTURAL COMPOSITE LUMBER (SCL) - LAMINATED STRAND LUMBER (LSL)
Listing Section	WALL ASSEMBLIES
Spec ID	39709

DRAWING INDEX

WNR/RB 120-01

WNR/RB 60-01

WNR/RB 60-02

WNR/RB 60-03

WNR/RB 60-04

WNR/RB 60-05

WNR/RB 60-06

WNR/RB 60-07

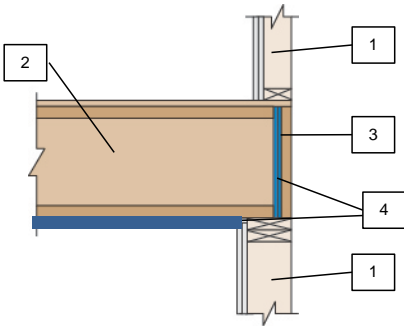
WNR/RB 60-08

WNR/RB 120-01

Division 06 – Wood, Plastics, and Composites
06 17 00 Shop-Fabricated Structural Wood
06 17 43 Rim Boards

Page 1 of 2

Weyerhaeuser NR Company
Design No. WNR/RB 120-01
Rim Board
Weyerhaeuser Rim Board, TJ® Rim Board, and TimberStrand® LSL
ASTM E119, CAN/ULC S101
Rating: 2 Hour Load Bearing



1. **WALL:** Fire-resistance rated wall construction.

2. **FLOOR:** Floor/ceiling rated or unrated assembly with floor joists running parallel or perpendicular to the wall. Min. 1-3/4 in. I-joists bearing length required. Ceiling membrane as required for Section 4 rim board protection.

3. **CERTIFIED MANUFACTURER:**
Weyerhaeuser NR Company

CERTIFIED PRODUCT: Rim Board

CERTIFIED MODEL: Weyerhaeuser Rim Board, TJ® Rim Board, and TimberStrand® LSL

Min. 1-1/8 in. thick rim board installed in accordance with the manufacturer's published installation instructions. The listed rating is for vertical fire-resistance on the occupancy side of an exterior wall and does not show specific details for cladding on the exterior side of the vertical wall. Design can be used for interior walls provided equivalent rim board protection is also installed on the opposite side (not shown).

4. **RIM BOARD PROTECTION:** Rim board is protected by a combination of ceiling membrane and direct-applied protection detailed in the table below items A-E. If I-joists are used the protection must be notched to fit at the four corners, or the space between the I-joist web and direct-applied protection must be filled with a web stiffener (1/16 in. gap between flange and stiffener).

Attach 1st layer of gypsum with a min. of four 1-1/2 in. Type W screws at a max. spacing of 12 in. oc, and 2nd layer of gypsum with a min. of four 2 in. Type W screws at a max. spacing of 12 in. oc. Where Type X gypsum is required, Type C may be substituted.

Attach rim board protection per plan.

Date Revised: April 28, 2017
Project No. G103033049



WNR/RB 120-01 (2 OF 2)

Division 06 – Wood, Plastics, and Composites
 06 17 00 Shop-Fabricated Structural Wood
 06 17 43 Rim Boards

Page 2 of 2

Item	Direct-applied Protection		Ceiling Membrane Protection	
	Min. Layers	Material	Min. Layers	Material
A	2	Min. 1/2 in. Type X gypsum	1 hour rated ceiling of (1) 5/8 in. Type C, (1) 1/2 in. Type C or (2) 1/2 in. Type X gypsum	
B	2	Min. 1-1/8 in. material from section 3		
C	1	Min. 1-3/4 in. material from section 3		
D	3	Min. 5/8 in. Type X gypsum	-	-
E	1	Min. 3 in. material from section 3	-	-

Date Revised: April 28, 2017
 Project No. G103033049

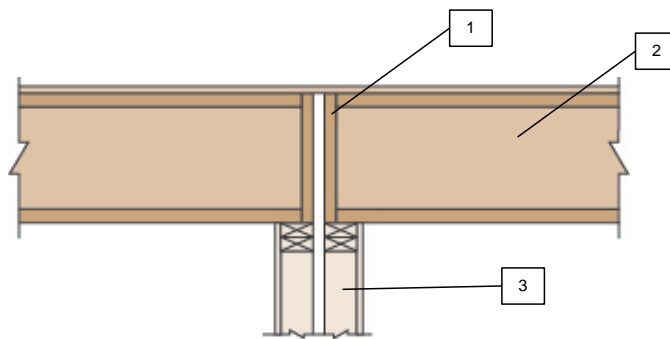


WNR/RB 60-01

Division 06 – Wood, Plastics, and Composites
 06 17 00 Shop-Fabricated Structural Wood
 06 17 43 Rim Boards

Page 1 of 1

Weyerhaeuser NR Company
Design No. WNR/RB 60-01
Rim Board
Weyerhaeuser Rim Board, TJ® Rim Board, and TimberStrand® LSL
ASTM E119, CAN/ULC S101
Rating: 1 Hour or 45 Minutes, Non-Load Bearing



- 1. CERTIFIED MANUFACTURER:**
 Weyerhaeuser NR Company

CERTIFIED PRODUCT: Rim Board

CERTIFIED MODEL: Weyerhaeuser Rim Board, TJ® Rim Board, and TimberStrand® LSL

Min. 1-1/8 in. thick rim board installed in accordance with the manufacturer's published installation instructions. Rim board only supporting limited roof level application dead load.

- 2. ROOF/CEILING:** Ceiling not required. Unrated roof/ceiling assembly with roof joists running parallel or perpendicular to the wall. Min. 1-3/4 in. I-joists bearing length required.

- 3. WALL:** Fire-resistance rated wall construction.

Date Revised: April 28, 2017
 Project No. G103033049

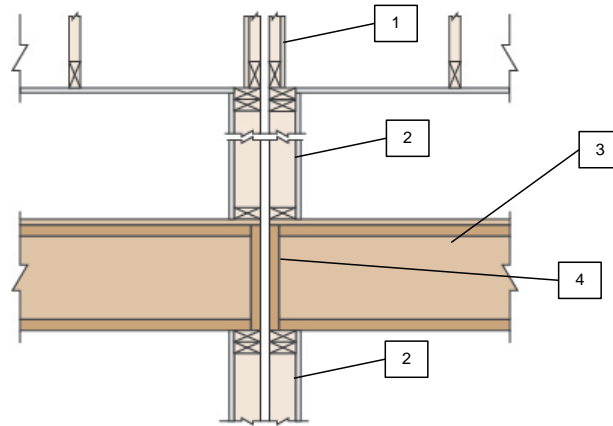


WNR/RB 60-02

Division 06 – Wood, Plastics, and Composites
 06 17 00 Shop-Fabricated Structural Wood
 06 17 43 Rim Boards

Page 1 of 1

Weyerhaeuser NR Company
Design No. WNR/RB 60-02
Rim Board
Weyerhaeuser Rim Board, TJ® Rim Board, and TimberStrand® LSL
ASTM E119, CAN/ULC S101
Rating: 1 Hour or 45 Minutes, Non-Load Bearing



- 1. ROOF/CEILING:** Roof truss or joist running parallel to wall.
- 2. WALL:** Fire-resistance rated wall construction.
- 3. FLOOR/CEILING:** Ceiling not required. Unrated floor/ceiling assembly with floor joists running parallel or perpendicular to the wall. Min. 1-3/4 in. I-joists bearing length required.

- 4. CERTIFIED MANUFACTURER:**
Weyerhaeuser NR Company

CERTIFIED PRODUCT: Rim Board

CERTIFIED MODEL: Weyerhaeuser Rim Board, TJ® Rim Board, and TimberStrand® LSL

Min. 1-1/8 in. thick rim board installed in accordance with the manufacturer's published installation instructions. Rim board only supporting limited dead load from wall above.

Date Revised: April 28, 2017
 Project No. G103033049

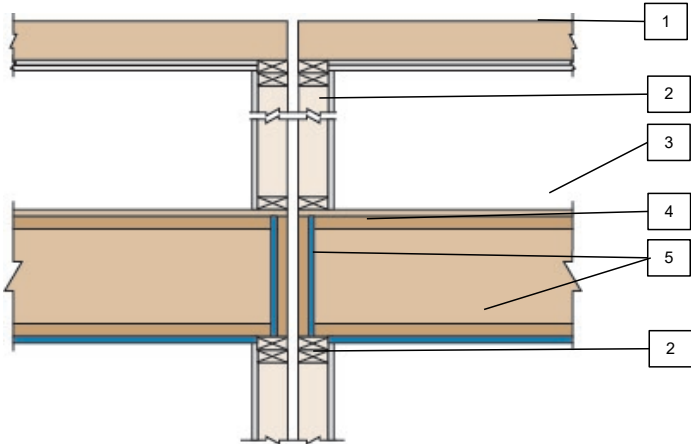


WNR/RB 60-03



Division 06 – Wood, Plastics and Composites
06 17 00 Shop-Fabricated Structural Wood
06 17 43 Rim Boards

Weyerhaeuser NR Company
Design No. WNR/RB 60-03
Rim Board
Weyerhaeuser Rim Board, TJ® Rim Board, and TimberStrand® LSL
ASTM E119, CAN/ULC S101
Rating: 1 Hour or 45 Minutes Load Bearing(Double bearing wall with full design load on rim board applied individually to each side of the wall assembly)



- 1. **FLOOR/ROOF:** Roof/ceiling or Floor/ceiling Assembly
- 2. **WALL:** Fire-resistance Rated Wall Construction
- 3. **FLOOR/CEILING:** Floor/ceiling rated or unrated assembly with floor joists running parallel or perpendicular to the wall. Min. 1 3/4 in. I-joists bearing length required. Ceiling membrane as required for Section 5 rim board protection.
- 4. **RIM BOARD:**

CERTIFIED PRODUCT: Weyerhaeuser NR, TJ® Rim Board, TimberStrand® LSL

Min. 1-1/8 in. thick rim board installed in accordance with the manufacturer’s published installation instructions. Discontinuous rim board is permitted at beam penetrations, provided that the end of the rim board and face of the penetrating beam are tightly abutted.

- 5. **RIM BOARD PROTECTION:** Rim board is protected by a combination of ceiling membrane and direct-applied protection detailed in the table below items A-J. Attach direct-applied protection to occupancy side of rim board. Rim board protection may be continuous or discontinuous. If I-joists are used, the protection must be notched to fit at the four corners, or the space between the I-joist web and direct-applied protection must be filled with a web stiffener (1/16 in. gap between flange and stiffener).

WNR/RB 60-03 (2 OF 2)

Division 06 – Wood, Plastics and Composites
06 17 00 Shop-Fabricated Structural Wood
06 17 43 Rim Boards

Attach first layer of gypsum with a min. of four 1-1/2 in. Type W screws at a max. spacing of 12 in. on center (oc), and second layer of gypsum with a min. of four 2 in. Type W screws at a max. spacing of 12 in. oc. Where Type X gypsum is required, Type C may be substituted.

Attach rim board protection per plan.

Item	Direct-applied Protection		Ceiling Membrane Protection		Rating (min)
	Min. Layers	Material	Min. Layers	Material	
A	2	Min. 1/2 in. Type X gypsum	-	-	60
B	1	Min. 5/8 in. Type X gypsum	-	-	45, 60 ⁽¹⁾
C	1	Min. 1-1/8 in. material from section 4	-	-	60
D	1	Min. 1-1/8 in. material from section 4	1	Min. 1/2 in. Type X gypsum	60
E	1	Min. 5/8 in. Type X gypsum	1	Unrated 1/2 in. gypsum	60
F	1	Min. 1/2 in. Type X gypsum	1	Unrated 1/2 in. gypsum	45
G	1	Min. 1/2 in. Type X gypsum	1	Min. 1/2 in. Type X gypsum	60
H	1	Min. 1/2 in. un-rated gypsum or 1-1/2 in. mineral wool batt insulation friction fit in place	1	Min. 5/8 in. Type X gypsum	60
I	-	-	1	Min. 5/8 in. Type X gypsum	45
J	-	-	1 hour rated ceiling of (1) 5/8 in. Type C, (1) 1/2 in. Type C or (2) 1/2 in. Type X gypsum		60

(1) 60 minutes applies only to rim board with vertical load restricted to 55% of design capacity, with the exception of 1-1/8 in. x 16 in. TJ Rim Board and Weyerhaeuser Rim Board which is load restricted to 50% of design capacity.

Consult the listing report on the Directory of Building Products (<https://bpdirectory.intertek.com>) for the edition of the standard(s) evaluated.

Compliance of the assembly described in this Design Listing with the referenced standard relies on verification that the assembly constructed in the field is consistent with that described herein. Intertek certified products may be verified by the approved Intertek label; other products must be verified by the Authority Having Jurisdiction as meeting the specifications stated herein.

Date Revised: June 25, 2025

Page 2 of 2

Spec ID 39709

Version: 02 August 2017

SFT-BC-OP-191

WNR/RB 60-04

Division 06 – Wood, Plastics, and Composites

06 17 00 Shop-Fabricated Structural Wood

06 17 43 Rim Boards

Page 1 of 1

Weyerhaeuser NR Company

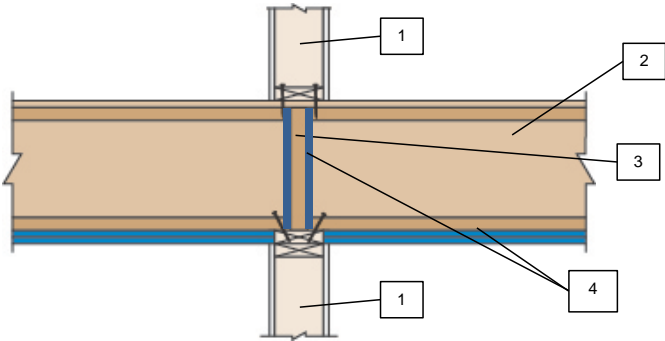
Design No. WNR/RB 60-04

Rim Board

Weyerhaeuser Rim Board, TJ® Rim Board, and TimberStrand® LSL

ASTM E119, CAN/ULC S101

Rating: 1 Hour or 45 Minutes, Load Bearing



1. **WALL:** Fire-resistance rated wall construction.
2. **FLOOR:** Floor/ceiling rated or unrated assembly non-continuous joists abutting to continuous rim board. Min. 1-3/4 in. I-joists bearing length required. Ceiling membrane as required for Section 4 rim board protection.
3. **CERTIFIED MANUFACTURER:**
Weyerhaeuser NR Company
- CERTIFIED PRODUCT:** Rim Board
- CERTIFIED MODEL:** Weyerhaeuser Rim Board, TJ® Rim Board, and TimberStrand® LSL
- Min. 1-1/8 in. thick rim board installed in accordance with the manufacturer's published installation instructions.
4. **RIM BOARD PROTECTION:** Rim board is protected by a combination of ceiling membrane and direct-applied protection detailed in the table below items A-D. Rim board protection may be continuous or discontinuous. If I-joists are used the protection must be notched to fit at the four corners, or the space between the I-joint web and direct-applied protection must be filled with a web stiffener (1/16 in. gap between flange and stiffener).
- Attach direct-applied protection gypsum with a min. of four 1-1/2 in. Type W screws at a max. spacing of 12 in. oc. Where Type X gypsum is required, Type C may be substituted.
- Attach rim board protection per plan.

Item	Direct-applied Protection		Ceiling Membrane Protection		Rating (min)
	Min. Layers	Material	Min. Layers	Material	
A	-	-	1	Min. 5/8 in. Type X gypsum	60
B	1	Unrated 1/2 in. gypsum (each side)	1	Min. 1/2 in. Type X gypsum	60
C	1	Min. 1-1/8 in. material from section 3	1	Min. 1/2 in. Type X gypsum	60
D	-	-	1	Min. 1/2 in. Type X gypsum	45

Date Revised: April 28, 2017
Project No. G103033049

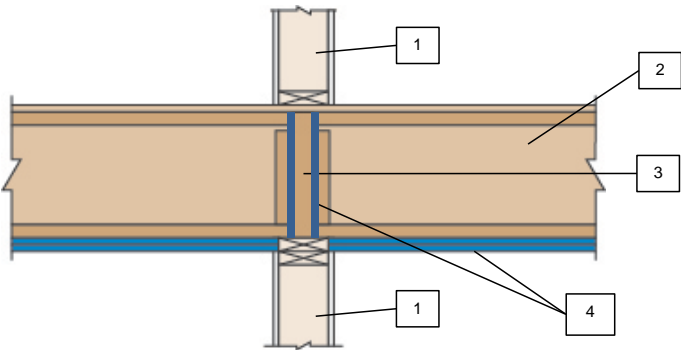


WNR/RB 60-05

Division 06 – Wood, Plastics, and Composites
06 17 00 Shop-Fabricated Structural Wood
06 17 43 Rim Boards

Page 1 of 2

Weyerhaeuser NR Company
Design No. WNR/RB 60-05
Rim Board
Weyerhaeuser Rim Board, TJ® Rim Board, and TimberStrand® LSL
ASTM E119, CAN/ULC S101
Rating: 1 Hour or 45 Minutes, Load Bearing



1. **WALL:** Fire-resistance rated wall construction.
2. **FLOOR:** Floor/ceiling rated or unrated assembly continuous floor joists and discontinuous rim board blocking. Min. 3-1/2 in. I-joists bearing length required. Ceiling membrane as required for Section 4 rim board protection.
3. **CERTIFIED MANUFACTURER:**
Weyerhaeuser NR Company
- CERTIFIED PRODUCT:** Rim Board
- CERTIFIED MODEL:** Weyerhaeuser Rim Board, TJ® Rim Board, and TimberStrand® LSL
- Min. 1-1/8 in. thick rim board installed in accordance with the manufacturer's published installation instructions.

4. **RIM BOARD PROTECTION:** Rim board is protected by a combination of ceiling membrane and direct-applied protection detailed in the table below items A-G. If I-joists are used the protection must be notched to fit at the four corners, or the space between the I-joist web and direct-applied protection must be filled with a web stiffener (1/16 in. gap between flange and stiffener).
- Attach 1st layer of gypsum with a min. of four 1-1/2 in. Type W screws at a max. spacing of 12 in. oc, and 2nd layer of gypsum with a min. of four 2 in. Type W screws at a max. spacing of 12 in. oc. Where Type X gypsum is required, Type C may be substituted.
- Attach rim board protection per plan.

Date Revised: April 28, 2017
Project No. G103033049



WNR/RB 60-05 (2 OF 2)

Division 06 – Wood, Plastics, and Composites
 06 17 00 Shop-Fabricated Structural Wood
 06 17 43 Rim Boards

Page 2 of 2

Item	Direct-applied Protection		Ceiling Membrane Protection		Rating (min)
	Min. Layers	Material	Min. Layers	Material	
A	-	-	1	Min. 5/8 in. Type X gypsum	45
B	1	Unrated 1/2 in. gypsum (each side)	1	Min. 5/8 in. Type X gypsum	60
C	1	Min. 1-1/8 in. material from section 3	1	Min. 1/2 in. Type X gypsum	60
D	1	Min. 5/8 in. Type X gypsum	1	Min. 1/2 in. Type X gypsum	60
E	2	Unrated 1/2 in. gypsum (each side)	1	Min. 1/2 in. Type X gypsum	60
F	1	Unrated 1/2 in. gypsum (each side)	1	Min. 1/2 in. Type X gypsum	45
G	-	-	1 hour rated ceiling of (1) 5/8 in. Type C, (1) 1/2 in. Type C or (2) 1/2-in. Type X gypsum		60

Date Revised: April 28, 2017
 Project No. G103033049

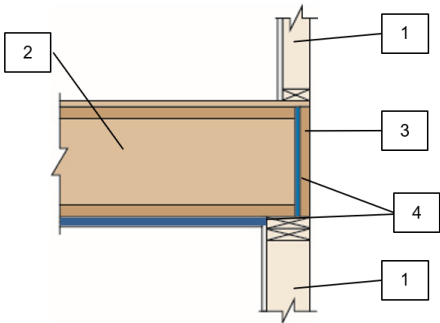


WNR/RB 60-06



Division 06 – Wood, Plastics and Composites
06 17 00 Shop-Fabricated Structural Wood
06 17 43 Rim Boards

Weyerhaeuser NR Company
Design No. WNR/RB 60-06
Rim Board
Weyerhaeuser Rim Board, TJ® Rim Board, Microllam® LVL, Parallam® PSL, and TimberStrand® LSL
ASTM E119, CAN/ULC S101
Rating: 1 Hour or 45 Minutes Load Bearing



- 1. **WALL:** Fire-resistance rated wall construction.
- 2. **FLOOR:** Floor/ceiling rated or unrated assembly with floor joists running parallel or perpendicular to the wall. Min. 1-3/4 in. I-joists bearing length required. Ceiling membrane as required for Section 4 rim board protection.
- 3. **CERTIFIED MANUFACTURER:** Weyerhaeuser NR Company

CERTIFIED PRODUCT: Rim Board

CERTIFIED MODEL: Weyerhaeuser Rim Board, TJ® Rim Board, Microllam® LVL, Parallam® PSL, and TimberStrand® LSL

Min. 1-1/8 in. thick depth rim board installed in accordance with the manufacturer’s published installation instructions. The listed rating is for vertical fire-resistance on the occupancy side of an exterior wall and does not show specific details for cladding on the exterior side of the

vertical wall. Design can be used for interior walls provided equivalent rim board protection is also installed on the opposite side (not shown).

- 4. **RIM BOARD PROTECTION:** Rim board is protected by a combination of ceiling membrane and direct-applied protection detailed in the table below items A-I. If I-joists are used the protection must be notched to fit at the four corners, or the space between the I-joist web and direct-applied protection must be filled with a web stiffener (1/16 in. gap between flange and stiffener).

Attach 1st layer of gypsum with a min. of four 1-1/2 in. Type W screws at a max. spacing of 12 in. oc, and 2nd layer of gypsum with a min. of four 2 in. Type W screws at a max. spacing of 12 in. oc. Where Type X gypsum is required, Type C may be substituted.

Attach rim board protection per plan.

WNR/RB 60-06 (2 OF 2)

Division 06 – Wood, Plastics and Composites
06 17 00 Shop-Fabricated Structural Wood
06 17 43 Rim Boards

Item	Direct-applied Protection		Ceiling Membrane Protection		Rating (min)
	Min. Layers	Material	Min. Layers	Material	
A	2	Min. 5/8 in. Type X gypsum	-	-	60
B	2	Min. 1-1/8 in. material from section 3	-	-	60
C	1	Min. 1-3/4 in. material from section 3	-	-	60
D	1	Min. 5/8 in. Type X gypsum	1	Unrated 1/2 in. gypsum	60
E	2	Min. 1-1/8 in. material from section 3	1	Unrated 1/2 in. gypsum	60
F	1	Min. 1-1/4 in. material from section 3	1	Unrated 1/2 in. gypsum	60 ¹
G	1	Min. 5/8 in. Type X gypsum	1	Min. 1/2 in. Type X gypsum	60
H	1	Min. 1-1/8 in. material from section 3	1	Min. 1/2 in. Type X gypsum	60
I	-	-	1 hour rated ceiling of (1) 5/8 in. Type C, (1) 1/2 in. Type C or (2) 1/2 in. Type X gypsum		60
J ²	-	-	1	Unrated ½ in. gypsum	45
K	1	Min. 1-1/8 in. material from section 3	1	Unrated ½ in. gypsum	45
L	1	Min. 5/8 in. Type X gypsum	-	-	45
M	1	Min. 1-1/8 in. material from section 3	-	-	45 ³

¹ Vertical load restricted to 75% of design capacity for 1-1/8 in. x 16 in. TJ Rim Board and Weyerhaeuser Rim Board and 95% for 1.25 in. thick TimberStrand LSL.

²For 1.75 in. thick TimberStrand LSL up to 18 in. deep, load restricted to a maximum vertical load of 2000 pounds per linear foot (plf) ASD.

³Vertical Load restricted to 45% for TJ Rim Board and Weyerhaeuser Rim Board, 60% for 1.25 in. thick Rim Board and 80% for 1.5 in. thick and greater Rim Board.

Date Revised: February 29, 2024

Page 2 of 2

Spec ID 39709

Version: 02 August 2017

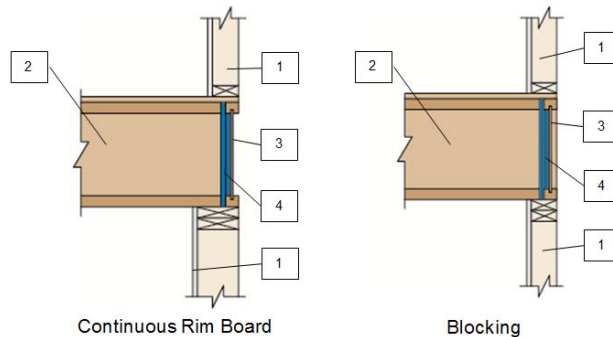
SFT-BC-OP-19I

WNR/RB 60-07

Division 06 – Wood, Plastics, and Composites
 06 17 00 Shop-Fabricated Structural Wood
 06 17 43 Rim Boards

Page 1 of 1

Weyerhaeuser NR Company
Design No. WNR/RB 60-07
Rim Board
TJI® Rim Joists
ASTM E119, CAN/ULC S101
Rating: 1 Hour Load Bearing



1. WALL: Fire-resistance rated wall construction.

2. FLOOR: Floor/ceiling rated or unrated assembly with floor joists running parallel or perpendicular to the wall. Min. 1-3/4 in. I-joists bearing length required.

3. CERTIFIED MANUFACTURER:
 Weyerhaeuser NR Company

CERTIFIED PRODUCT: Rim Joists

CERTIFIED MODEL: TJI® Joists

Min. I-joist flange 1-1/4 in. depth x 1-3/4 in. width, installed in accordance with the manufacturer's published installation instructions. The listed rating is for vertical fire-resistance on the occupancy side of an exterior wall and does not show specific details for cladding on the exterior side of the vertical wall. Design can be used for interior walls provided that the 5/8 in. Type X gypsum is also installed on the opposite side to both the web and flanges of joist (not shown).

4. RIM BOARD PROTECTION:

CONTINUOUS RIM – Attach 1st layer of 5/8 in. Type X gypsum board fastened to web of the rim joist with a min. of four 1-1/2 in. Type W screws at a max. spacing of 12 in. oc, and 2nd layer of 5/8 in. Type X gypsum board fastened to the flanges of the rim joists with a min. of four 1-1/2 in. Type W screws at a max. spacing of 12 in. oc.

BLOCKING – Attach 1st layer of 5/8 in. Type X gypsum board extended to web of the adjacent joist with a min. of four 1-1/2 in. Type W screws at a max. spacing of 12 in. oc, and 2nd layer of 5/8 in. Type X gypsum board notched to fit at the corners and fastened to the flanges of the rim joists with a min. of four 1-1/2 in. Type W screws at a max. spacing of 12 in. oc.

Date Issued: January 6, 2017
 Project No. G102778971

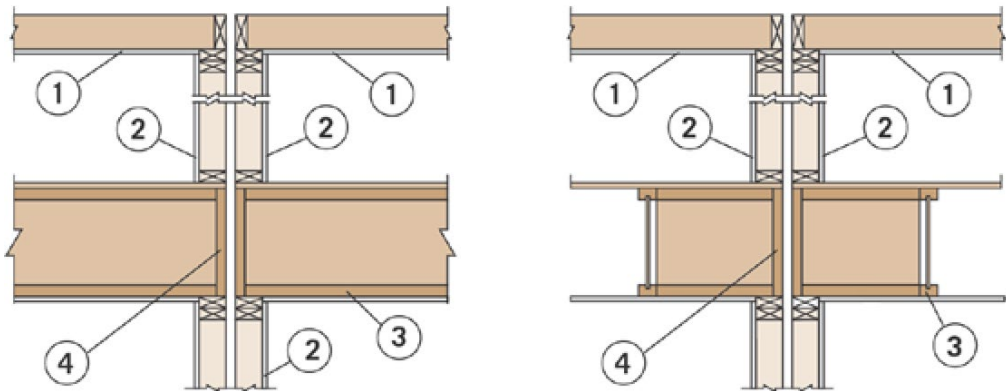


WNR/RB 60-08



Division 06 – Wood, Plastics, and Composites
06 17 00 Shop-Fabricated Structural Wood
06 17 43 Rim Boards

Weyerhaeuser NR
WNR/RB 60-08
Rim Board
TimberStrand LSL
ASTM E119 and CAN/ULC S101
Rating: 1 Hour Load Bearing, Restricted to Max. Vertical Load of 2000 plf ASD
(unfactored) per Rim Board Member



- 1. **ROOF/FLOOR/CEILING:** Floor/ceiling or roof/ceiling assembly as required by the applicable Building Code.
- 2. **RATED WALL ASSEMBLY:** 1 hour rated wall assembly installed in accordance with the applicable Building Code.
- 3. **FLOOR ASSEMBLY:**

CERTIFIED PRODUCT: Weyerhaeuser NR, TJI® Joist Series

Min. Depth: 9-1/2 in. Max. Spacing: 24 in. oc. Installed in accordance with manufacturer's published installation instructions.

- 4. **RIM BOARD:**

CERTIFIED PRODUCT: Weyerhaeuser NR, TimberStrand LSL

Min. 1-3/4 in. thick 1.5E or greater TimberStrand LSL installed in accordance with the manufacturer's published installation instructions. Max. rim board depth of 16 in. Discontinuous rim board is permitted at beam penetrations, provided that the end of the rim board and face of the penetrating beam are tightly abutted.

For rim boards deeper than 11-7/8 in., TJI blocking placed at 4 ft. on center (oc) is required at walls running parallel to the floor joists. Attach blocking in accordance with Weyerhaeuser TJI Specifiers Guide.

Rim board can be protected by using either direct-applied protection or ceiling membrane protection detailed in table below. Attach direct-applied protection to the occupancy side of rim board. Rim board protection may be continuous or discontinuous.

WNR/RB 60-08 (2 OF 2)



Division 06 – Wood, Plastics, and Composites
06 17 00 Shop-Fabricated Structural Wood
06 17 43 Rim Boards

If I-Joists are used, the protection must be notched to fit at the four corners, or the space between the I-joist web and direct applied protection must be filled with a web stiffener (1/16 in. gap between flange and stiffener). Attach gypsum with a min. of four 1-1/2 in. Type W screws at a max. spacing of 12 in. oc.

Item	Min. Layers	Materials	
		Direct-Applied Protection	Ceiling Membrane Protection
A	1	Min. ½ in. unrated gypsum	-
B	1	-	Min. ½ in. unrated gypsum

Consult the listing report on the Directory of Building Products (<https://bpdirectory.intertek.com>) for the edition of the standard(s) evaluated.

Compliance of the assembly described in this Design Listing with the referenced standard relies on verification that the assembly constructed in the field is consistent with that described herein. Intertek certified products may be verified by the approved Intertek label; other products must be verified by the Authority Having Jurisdiction as meeting the specifications stated herein.