



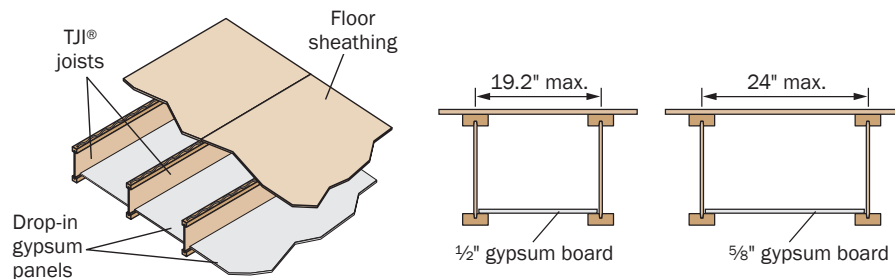
TRUS JOIST® PRODUCTS SATISFY CODE FIRE PROTECTION REQUIREMENTS

In 2020, the Canadian Construction Materials Centre (CCMC) began requiring CCMC reports for I-joists to include joist protection options that provide fire performance equivalent to exposed 2x10 lumber joists in unfinished basements of single-family houses. Because joist protection is not mandated by the National Building Code of Canada (NBCC), individual jurisdictions will determine whether or not to require protection of joists in unfinished basements. Where jurisdictions require 2x10-equivalent performance, this requirement should be applied to all types of floor assemblies for consistency, and the same tests methods should be followed to substantiate performance claims.

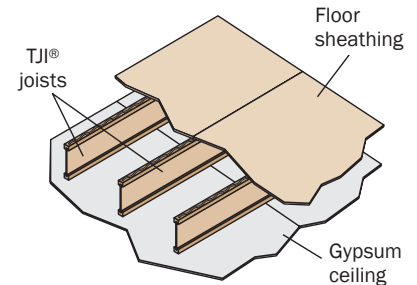
CAN TRUS JOIST® TJI® JOISTS BE USED TO SATISFY CCMC FIRE PROTECTION RECOMMENDATIONS?

YES. For TJI® joists with minimum flange dimensions of 1½" deep and 2" wide, installing drop-in gypsum panels along the bottom flange meets CCMC recommendations for fire protection of floors. For all TJI® joists (any flange dimension), gypsum membrane applied to the underside of the joists meets CCMC recommendations as well. This makes TJI® joists an excellent option for basements that will be finished. TJI® joists are engineered for superior performance, and with several joist series and a variety of depths to choose from, a customized floor solution is always possible.

Drop-in Gypsum Option (for all TJI® joists except TJI® 110)



Gypsum Membrane Option (for all TJI® joists)

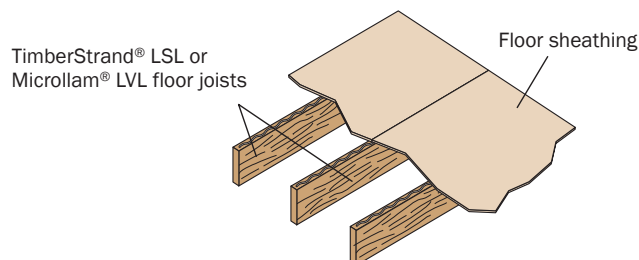


ARE OTHER OPTIONS AVAILABLE FOR TJI® JOISTS?

YES. For additional protection options see CCMC 13132-R.

DO STRUCTURAL COMPOSITE LUMBER JOISTS PROVIDE FIRE PERFORMANCE EQUIVALENT TO 2X10 SAWN LUMBER?

YES. Trus Joist® TimberStrand® LSL and Microllam® LVL floor joists with dimensions of 1½" x 9¼" or larger will perform as well or better than 2x10 joists when exposed to fire, eliminating the need for additional fire protection. TimberStrand® LSL floor joists are available in both 1½" and 1¾" widths and depths matching both sawn and engineered lumber sizes. They also have large allowable hole zones to accommodate most residential plumbing and wiring needs. Microllam® LVL floor joists are available in a 1¾" width and depths matching engineered lumber sizes. They provide superior strength and stiffness and also accommodate longer spans.



CONTACT US | 888.453.8358 | WEYERHAEUSER.COM/WOODPRODUCTS

December 2019
Reorder TJ-9513

Weyerhaeuser, TimberStrand, TJI and Trus Joist are registered trademarks of Weyerhaeuser NR.
© 2019 Weyerhaeuser NR Company. All rights reserved.

