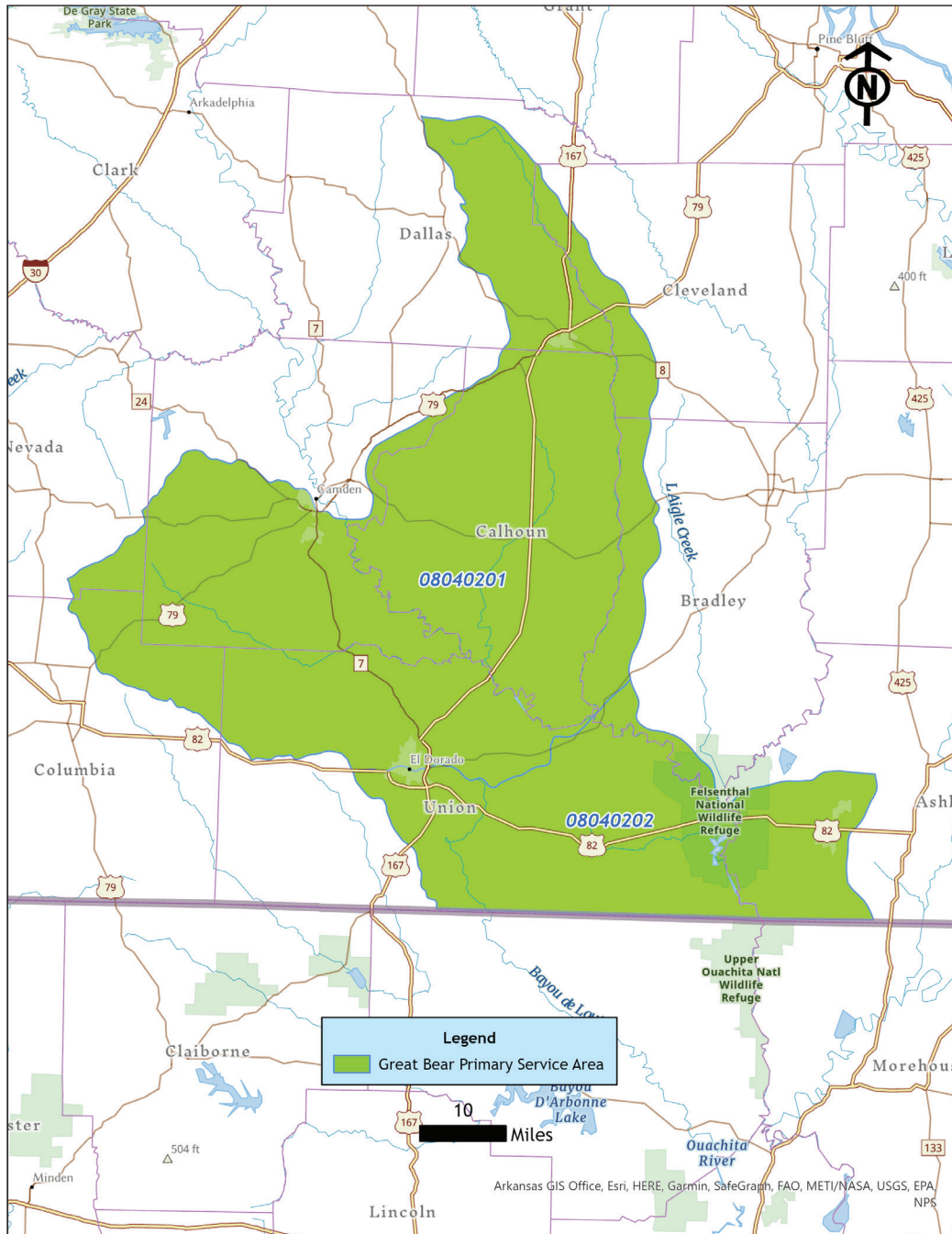


Bank: GREAT BEAR - *Bottomland Hardwood*



Location: Ashley County, AR

Acreage: +/- 514 acres

Purpose: Restoring 439 acres of bedded pine plantations to native bottomland hardwoods, along with 51 acres of upland buffer, to a mixed pine and hardwood forest; preserving 17 acres of existing bottomland hardwood forest

Primary HUC:

08040202 (Lower Quachita-Bayou De Loutre)

08040201 (Lower Quachita-Smackover)

Sales and Marketing Contact:

Daniel S. Coggin

Coggin Asset Management, LLC

daniel@cogginassetmanagement.com

662.825.0058

