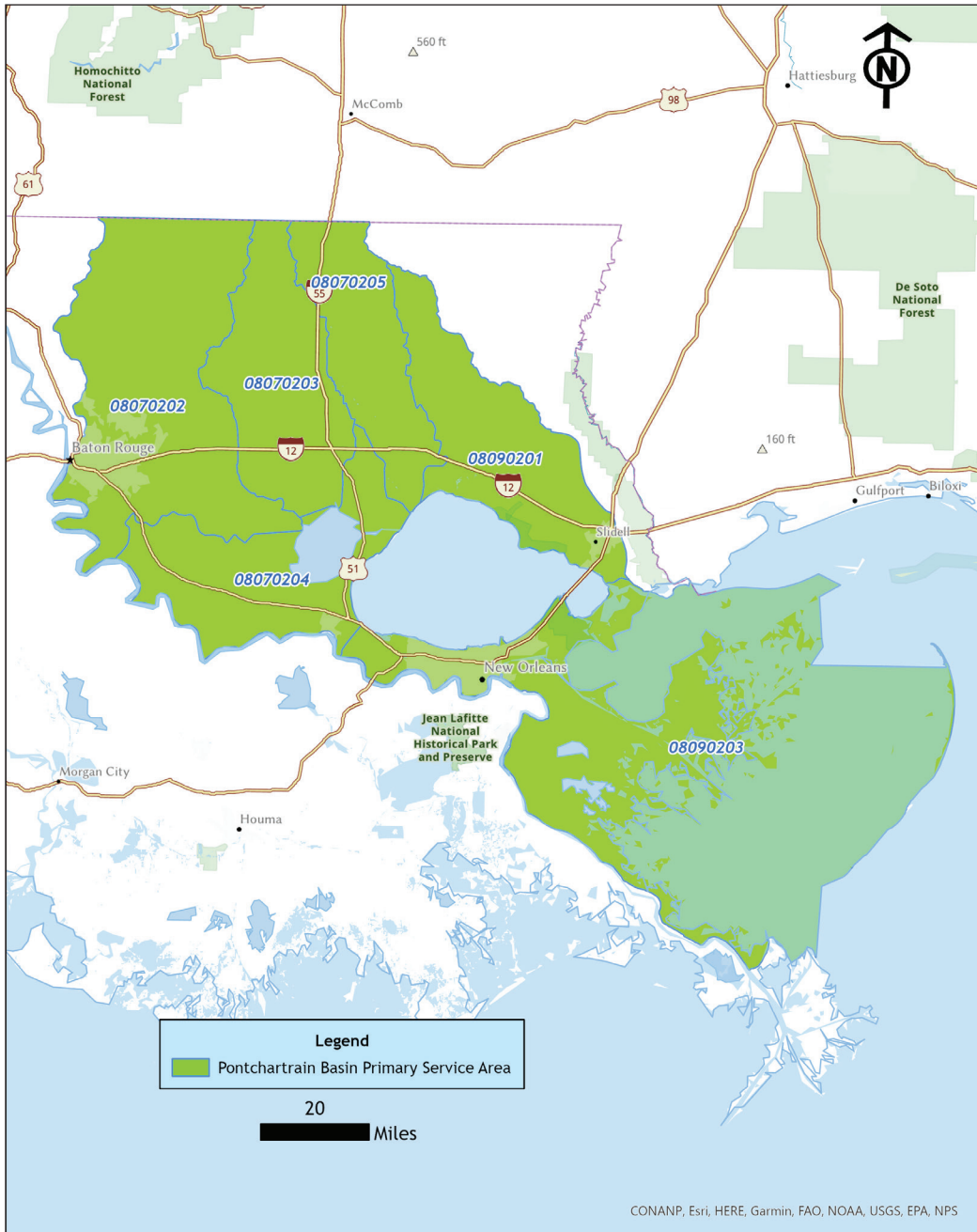


# Bank: PONTCHARTRAIN BASIN UMBRELLA MITIGATION

## BANK - *Bottomland Hardwood*



**Location:** Livingston Parish, LA

**Acreage:** +/- 7,385 acres

**Purpose:** Rehabilitation, enhancement and preservation of hardwood and flatwood forested wetland ecosystems as described by the Louisiana Department of Wildlife and Fisheries Natural Heritage Program (LNHP 2009)

### Primary HUC:

- 08070202** (Amite)
- 08070203** (Tickfaw)
- 08070204** (Lake Maurepas)
- 08070205** (Tangipahoa)
- 08090201** (Liberty Bayou-Tchefuncta)
- 08090202** (Lake Pontchartrain)
- 08090203** (Eastern Louisiana Coastal)

### Sales and Marketing Contact:

**Codi Moore**  
Delta Land Services  
codi@deltaland-services.com  
225.718.0428

