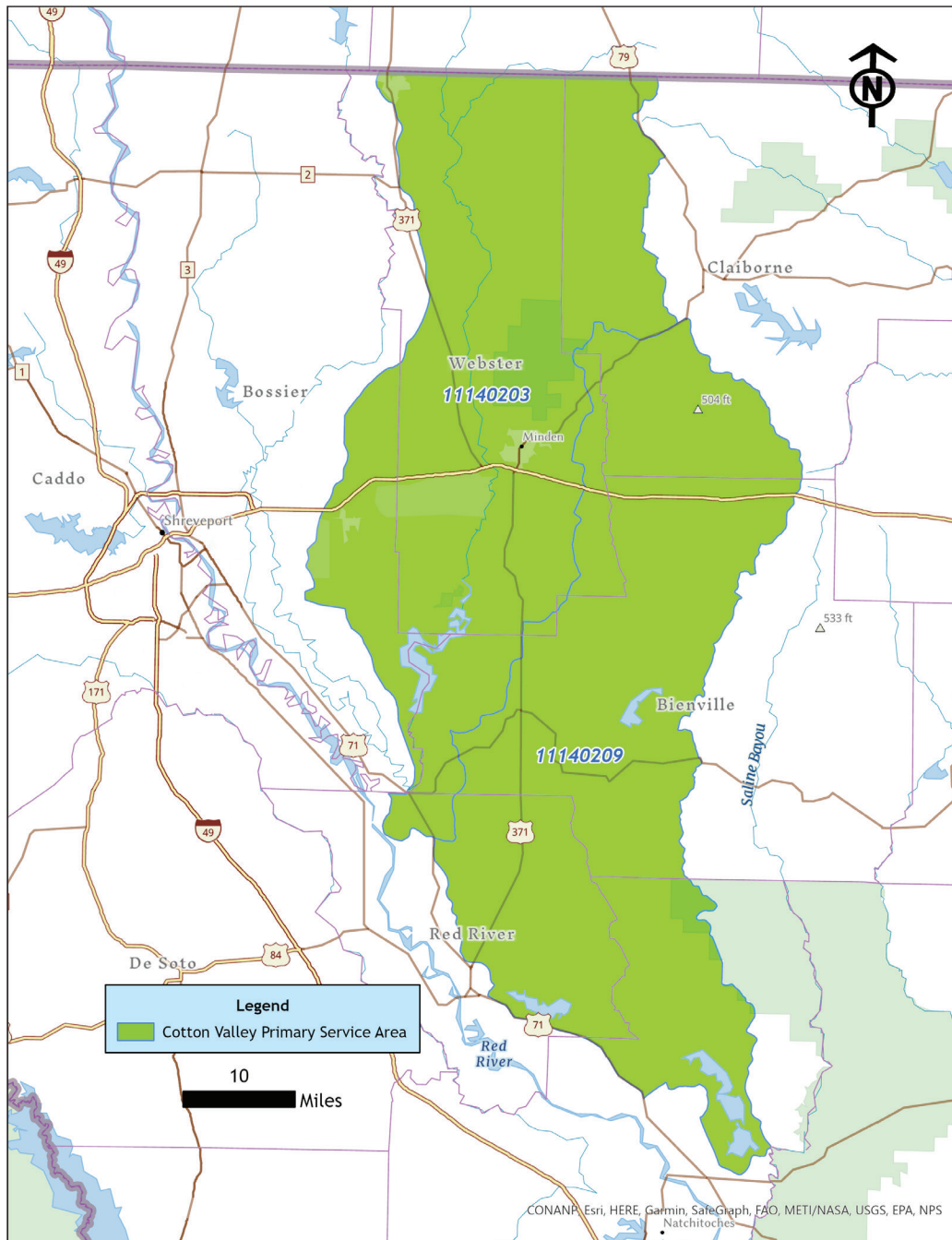


Bank: COTTON VALLEY - *Bottomland Hardwood and Stream*



Location: Webster Parish, LA

Acreage: +/- 678 acres

Purpose: Restoring 206 acres of wetland and 20 acres of upland buffer; enhancing 87 acres of wetland from intensively managed pine plantations to native bottomland hardwood, along with preserving 259 acres of bottomland hardwood; enhancing 68 acres, or 18,696 linear feet of stream, along Bayou Dorcheat

Primary HUC:

11140203 (Loggy Bayou)

11140209 (Black Lake Bayou)

Sales and Marketing Contact:

Daniel S. Coggin

Coggin Asset Management, LLC

daniel@cogginassetmanagement.com

662.825.0058

