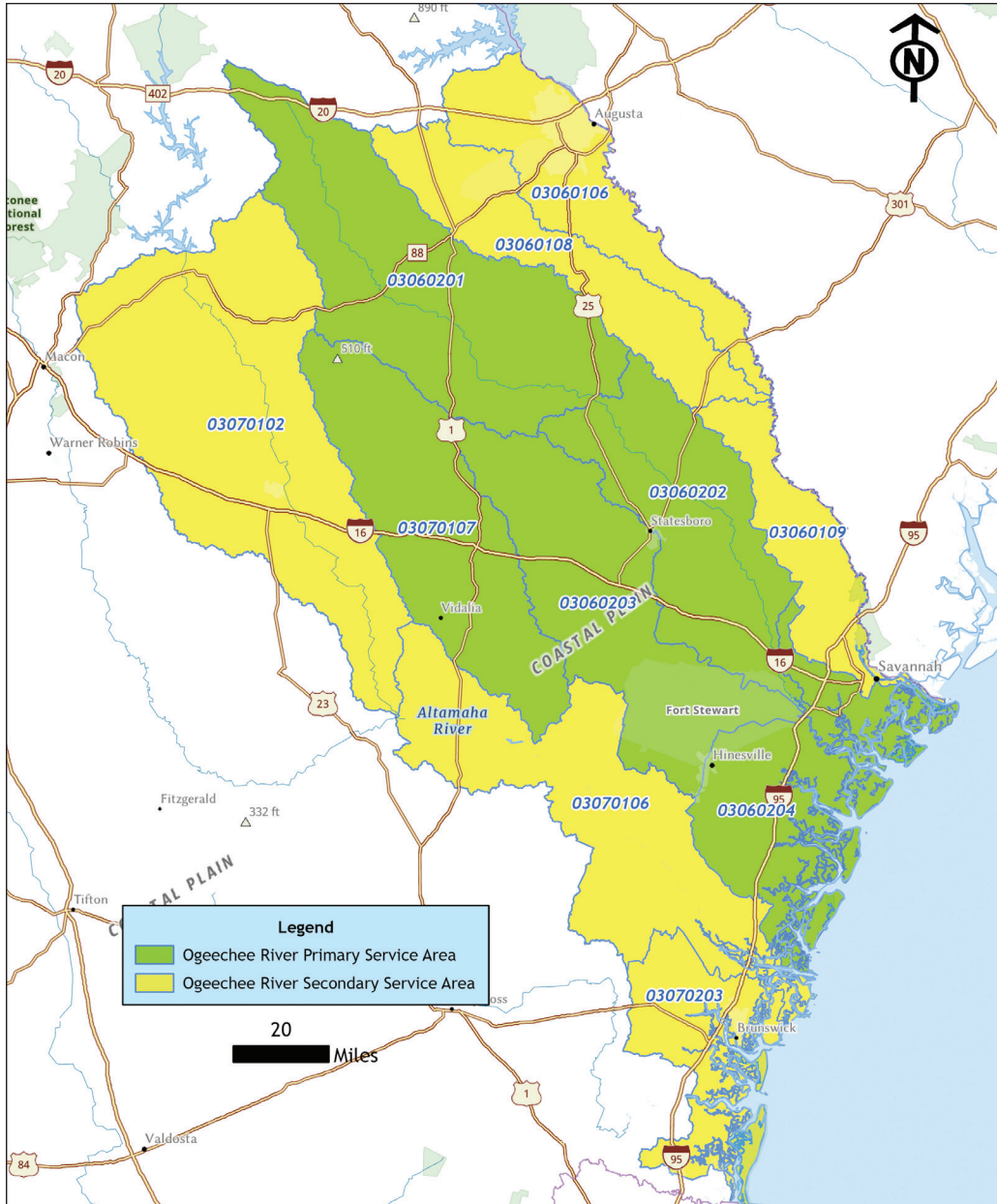


# Bank: BRADY BRANCH (PENDING) - *Freshwater Riverine/Slope*

## Wetlands and Stream



**Location:** Screven County, GA

**Acreage:** +/- 3,698 acres

**Purpose:** Mitigation efforts on the site will result in the restoration, enhancement and/or preservation of approximately 3,137 acres of freshwater riverine and slope wetlands and over 7,400 linear feet of streams

### Primary HUC:

**03060201** (Upper Ogeechee)

**03060202** (Lower Ogeechee)

**03060203** (Canoochee)

**03060204** (Ogeechee Coastal)

**03070107** (Ohoopee)

### Secondary HUC:

**03060106** (Middle Savannah)

**03060108** (Brier)

**03060109** (Lower Savannah)

**03070102** (Lower Oconee)

**03070106** (Altamaha)

**03070203** (Cumberland-St. Simons)

### Sales and Marketing Contact:

**Chris Muckenfuss**

Weyerhaeuser

[chris.muckenfuss@weyerhaeuser.com](mailto:chris.muckenfuss@weyerhaeuser.com)

843.607.2233

