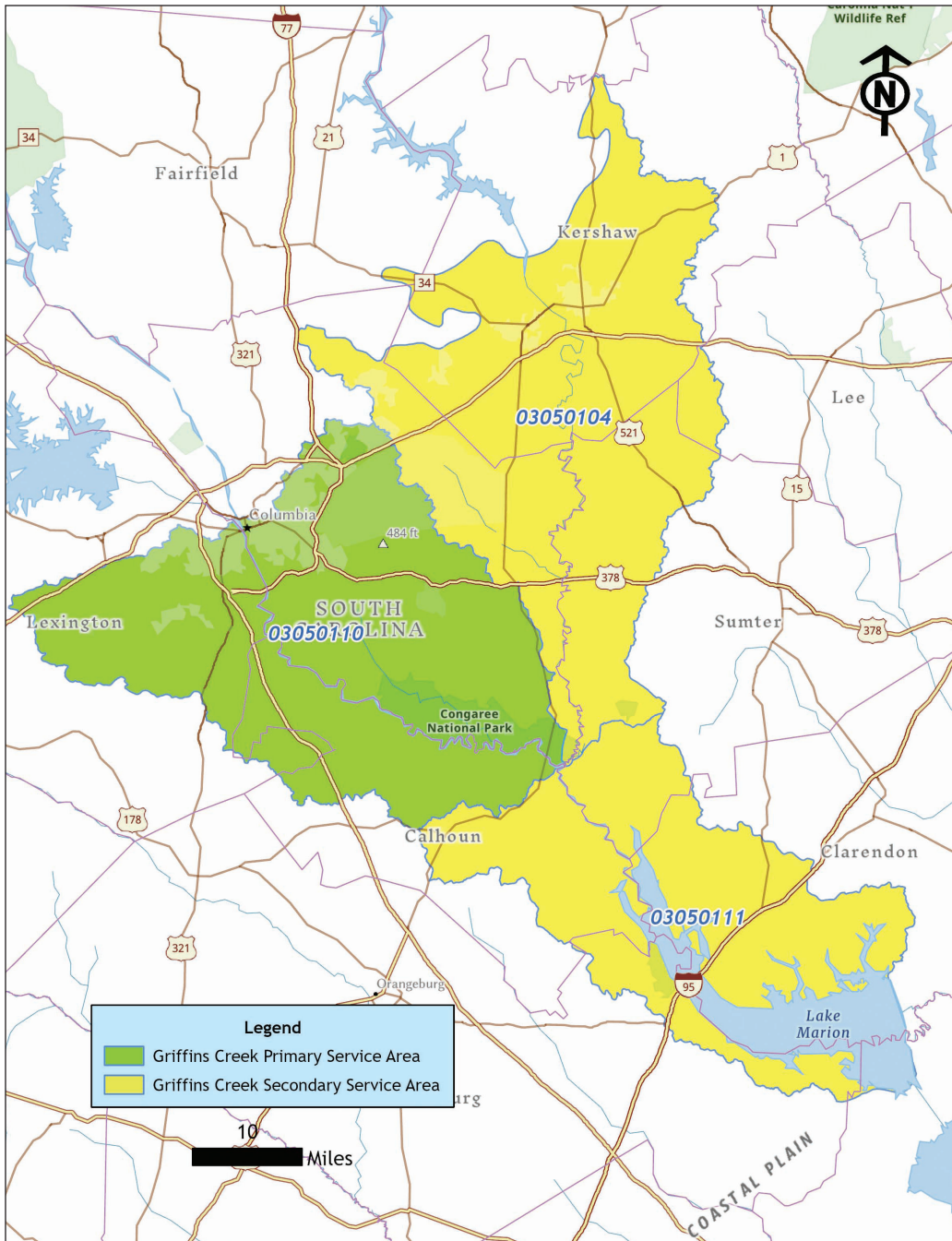


# Bank: GRIFFINS CREEK (PENDING) - *Freshwater Enhancement/Restoration*



**Location:** Palmetto Umbrella Mitigation Bank in Richland County, SC

**Acreage:** +/- 1,341 acres

**Purpose:** Restoration, enhancement and/or preservation of approximately 1,323 acres of freshwater wetlands

## Primary HUC:

**03050110** (Congaree)

## Secondary HUC:

**03050104** (Waterree)

**03050111** (Lake Marion)

## Sales and Marketing Contact:

**Chris Muckenfuss**

Weyerhaeuser

[chris.muckenfuss@weyerhaeuser.com](mailto:chris.muckenfuss@weyerhaeuser.com)

843.607.2233

