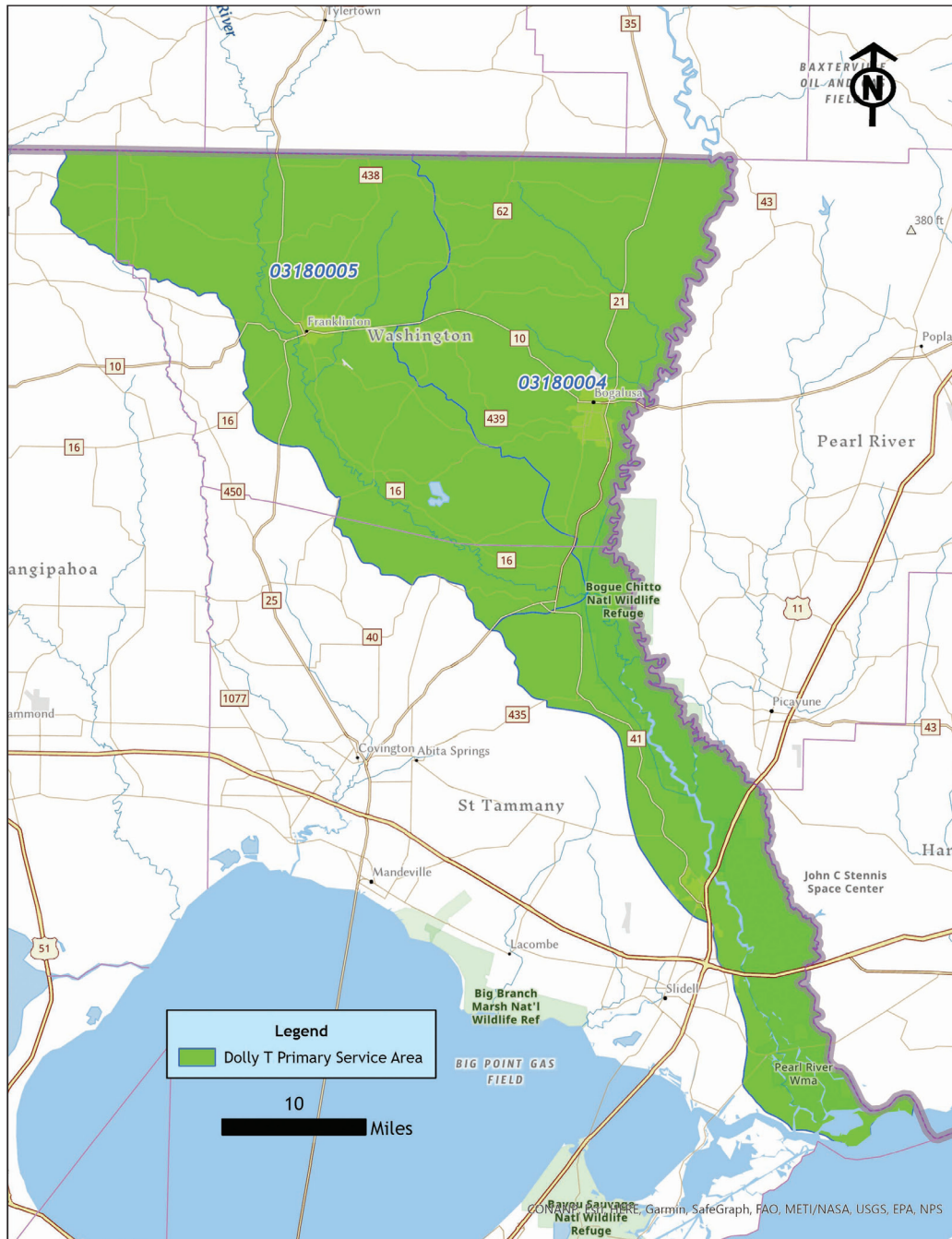


Bank: DOLLY T - *Pine Savannah*



Location: St. Tammany Parish, LA

Acreeage: +/- 1,473 acres

Purpose: Restoring 1,159 acres of intensively managed pine; enhancing 215 acres of existing bayhead swamp wetlands, 69 acres of cypress/hardwood flat wetlands and 30 acres of uplands

Primary HUC:

03180004 (Lower Pearl)

03180005 (Bogue Chitto)

Sales and Marketing Contact:

Andrew J. Harrison, Jr.

Wetlands Mitigation Strategies, LLC

ajh@wetlandsmitigationstrategies.com

225.907.3380

