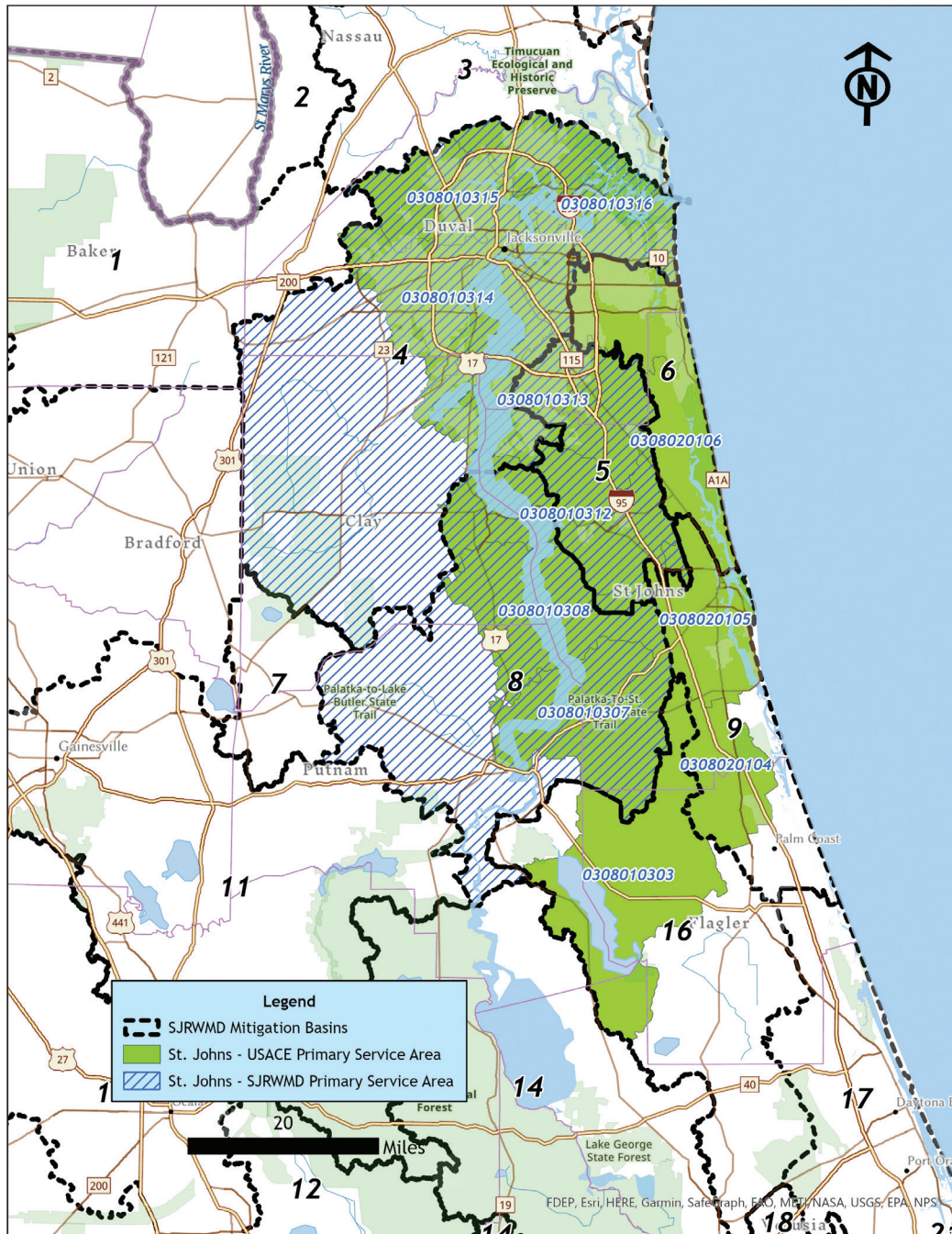


# Bank: ST. JOHNS - *Palustrine Forested*



**Location:** St. Johns County, FL

**Acreage:** +/- 3,580 acres

**Purpose:** Enhancement of approximately 3,110 acres of mesic flatwoods, wet flatwoods, basin swamp, bottomland hardwoods and approximately 430 acres of uplands



## FEDERAL UMAM CREDITS

### Primary HUC:

- 30801031601** (Broward River)
- 308010315** (Trout Creek-St. Johns River)
- 308010314** (Ortega River-St. Johns River)
- 30801031602** (Big Island Swamp)
- 30801031604** (Upper Pablo Creek)
- 308010310** (North Fork of Black Creek)
- 308010309** (South Fork of Black Creek)
- 308010311** (Black Creek-St. Johns River)
- 308010313** (Doctors Lake-St. Johns River)
- 308010312** (Palmo Cove-St. Johns River)
- 308010308** (Clarks Creek-St. Johns River)

## STATE UMAM CREDITS

**St Johns River Water Management District**  
**Basins 4, 5 and 8: See Map**

## Sales and Marketing Contact:

**Bill Schroeder**  
 Mitigation Development Services  
 bill@mitigationdev.com  
 904.536.3386

